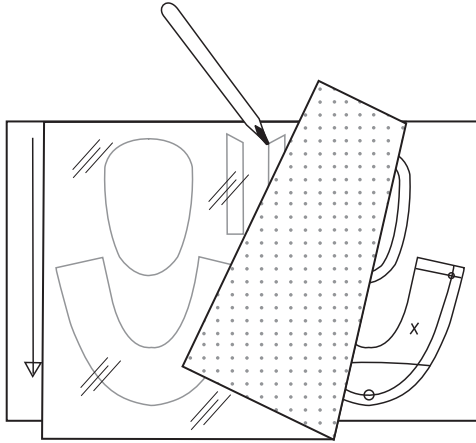


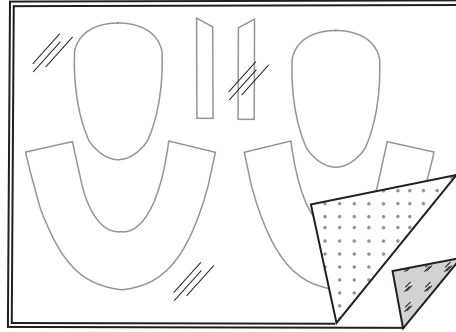
GENERAL INSTRUCTIONS

Lining Instructions

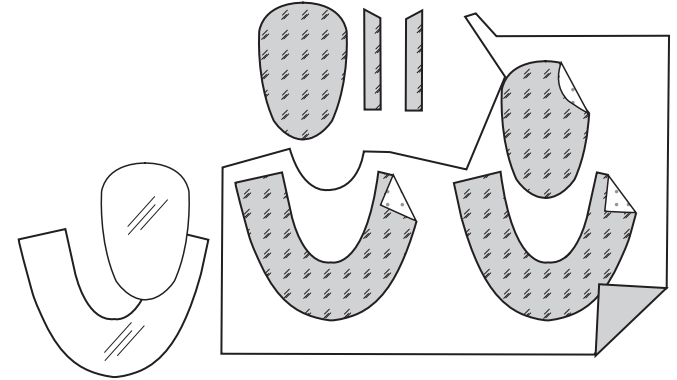
1. Place webbing, paper side up, over wrong side of pattern tissues. Trace shapes onto paper backing.



2. For lining, fuse webbing to wrong side of Felt Remnant, following manufacturer's instructions.



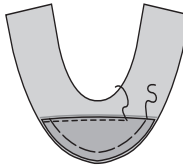
3. Cut out lining sections. Remove paper backing. Fuse lining sections to wrong side of Fabric Remnant. Cut out individual sections following shape of lining sections.



SHOES

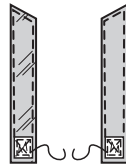
Prepare SHOE pattern piece following Lining Instructions.

Optional Toes: Place Toes on each Top, having upper edge along placement line. Stitch close to upper edge. Baste outer edges together.

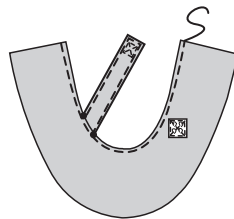


Optional straps:

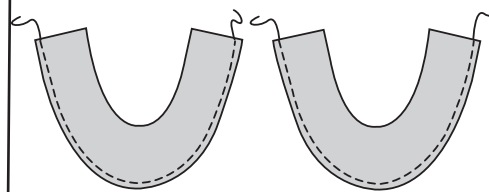
EDGESTITCH each Strap section close to edges.
Cut two 3/8" (1cm) squares from hook and loop tape. On inside, pin stiff section of hook and loop tape to each strap section, centering over marking. Stitch in place.



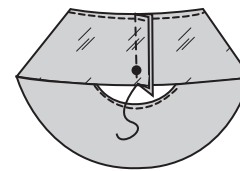
Place inner edge of top over remaining end of straps, matching small dots. Stitch close to inner edge of top.
On outside, pin soft section of hook and loop tape to each Top section, centering over marking. Stitch in place.



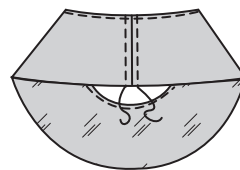
1. **STAYSTITCH** outer edge of each top section.



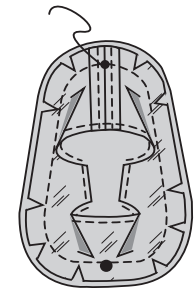
2. Stitch center back seam in each top section.



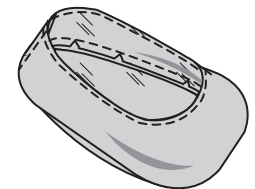
3. **EDGESTITCH** top sections along seam.



4. Pin Sole to top sections, having right sides together and matching symbols. Clipping top as necessary. Stitch.



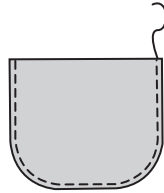
5. Turn right side out.





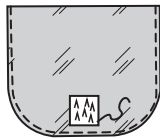
Purse Prepare PURSE pattern piece following Lining Instructions.

1. **EDGESTITCH** Flap close to sides and lower edge.

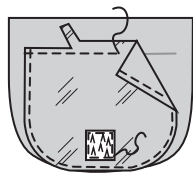


2. Cut one 1/2" (1.3cm) square from hook and eye tape.

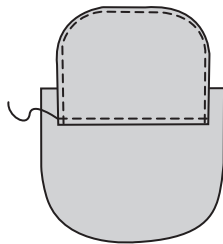
On inside, pin stiff section of hook and eye tape to Flap, centering within placement lines. Stitch in place.



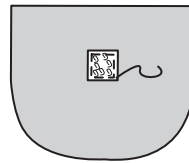
3. Pin flap to Back, having right sides together and centering seamline over placement line, as shown. Stitch along seamline. Trim seam allowance close to stitching, being careful not to cut back.



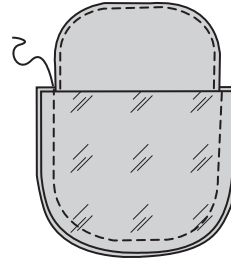
4. Turn flap up along seam; finger press. Stitch flap 1/8" (3mm) from seam.



5. On outside, pin soft section of hook and loop tape to Front, centering within placement lines. Stitch in place.

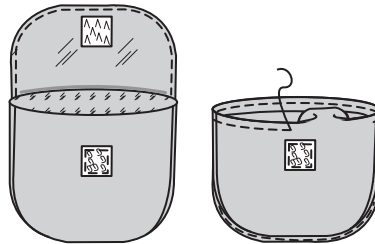


6. Stitch front and back together at sides and lower edge.

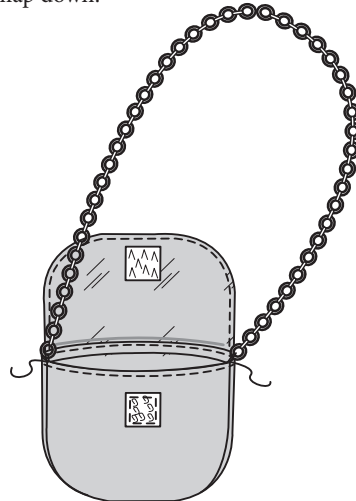


7. Turn right side out; press.

Turn in seam allowance on upper edge of bag; press. Stitch 1/8" (3mm) from upper edge, keeping flap free.

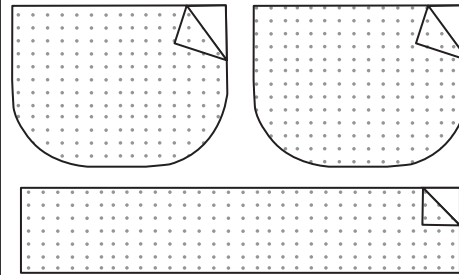


8. Cut one section from chain, 15" (38cm) long. Tack ends of chain to upper side edges of bag. Turn flap down.



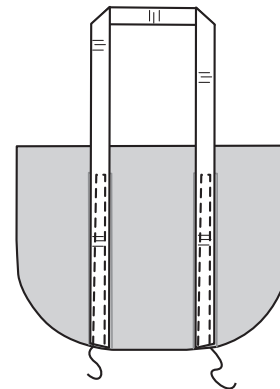
TOTE Cut out sections from TOTE pattern pieces.

1. Fuse INTERFACING to wrong side of each matching FABRIC section, following manufacturer's instructions.

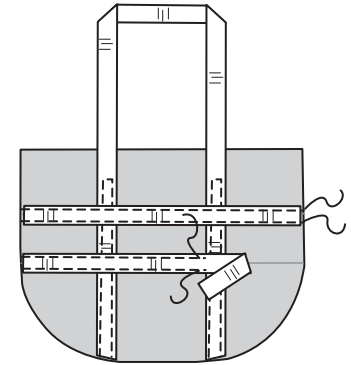


2. For straps, cut two sections from ribbon, each 13" (33cm) long.

Pin one strap to Back, centering within placement lines and having ends even with lower edge. Stitch close to long edges, pivoting across strap 1/2" (1.3cm) below upper edge. Apply remaining strap to Front in same manner.



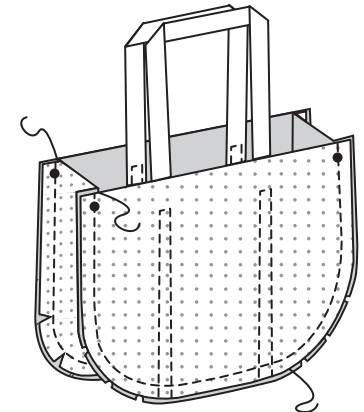
3. **Optional Ribbon:** Center ribbon over remaining placement lines on front, as shown. Stitch close to long edges.



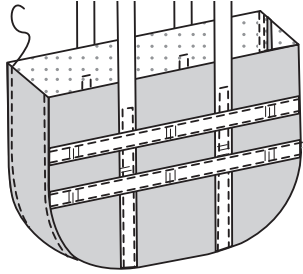
4. **STAYSTITCH** long edges of Gusset.



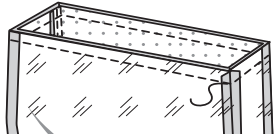
5. Pin gusset to sides and lower edge of front and back, matching small dots and clipping gusset where necessary. Stitch. Press seam toward gusset.



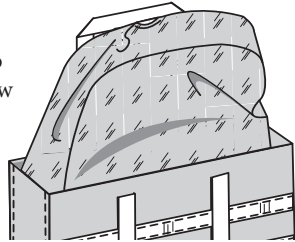
6. Turn right side out; press.
EDGESTITCH gusset along seams.



7. For lining, stitch remaining Tote sections together in same manner, omitting optional ribbon.
Pin lining to bag, having right sides together and matching seams. Stitch along upper edge, keeping straps free.

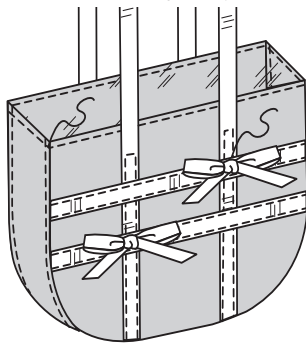


8. Turn lining to inside; press. Sew opening.



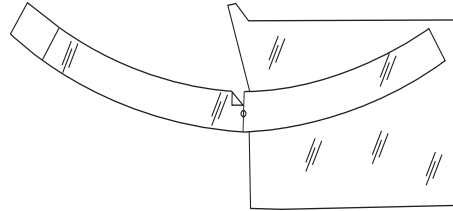
9. **EDGESTITCH** upper edge of bag, keeping straps free.

Optional Bows: Cut two sections from remainder of ribbon, each 5 1/2" (14cm) long. Tie each ribbon into bow. Tack bows to front, as shown. Trim ends diagonally.

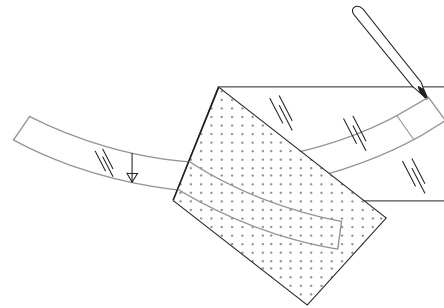


BELT

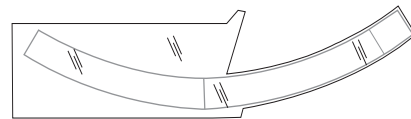
1. Cut out Belt pattern tissue sections. Tape sections together as one piece, matching small dot.



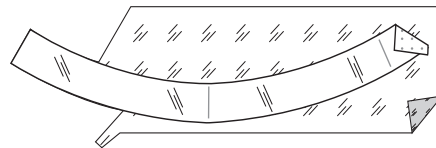
2. Place webbing, paper side up, over wrong side of BELT pattern tissue. Trace belt onto paper backing.



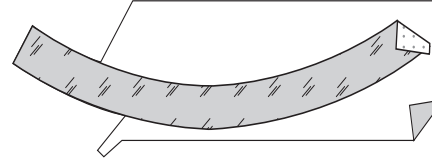
3. Cut out webbing for belt a scant 1/4" (6mm) from cutting lines.



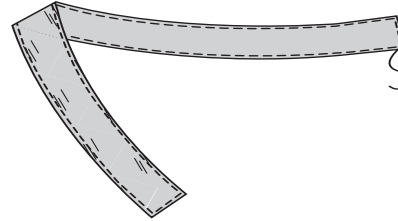
4. For belt lining, fuse webbing to wrong side of Felt Remnant, following manufacturer's instructions.
Cut out belt lining.



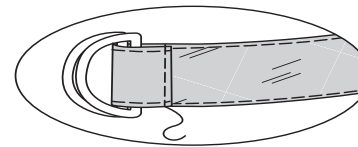
5. Remove paper backing. Fuse belt lining to wrong side of felt remnant. Cut out belt following shape of lining. **Note:** Remainder of remnant will be used for flower.



6. **EDGESTITCH** belt, as shown.



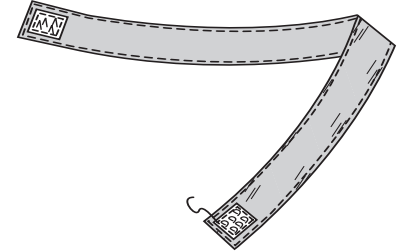
7. **Belt with D-rings:** Insert straight end of belt through rings, turning end to inside along center front. Stitch in place.



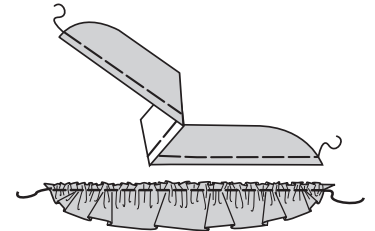
8. **Belt with flower:**



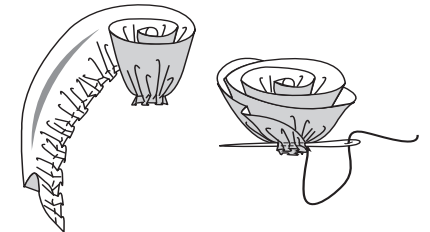
Cut one section from hook and loop tape, 1" (2.5cm) long.
On outside, pin soft section of hook and loop tape to one end of belt, as shown. Stitch in place.
On inside, pin stiff section of hook and loop tape to remaining end of belt, as shown. Stitch in place.



9. Hand gather long straight edge of Flower. Adjust gathers tightly; secure thread ends.



10. Starting at one end, roll flower toward you; sewing layers together as you roll.



12. Arrange flower over belt, as shown. Sew in place.

