

how to sew: bodice and lining continuous side seams



RIGHT SIDE
OF FABRIC



BACK SIDE
OF FABRIC



INTERFACING

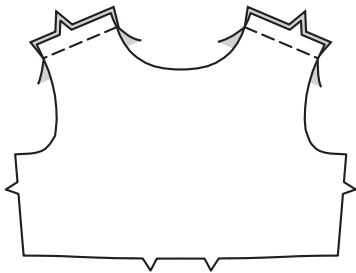


RIGHT SIDE OF
LINING

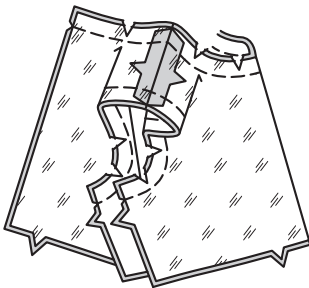


BACK SIDE OF
LINING

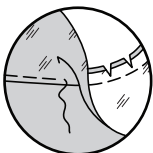
1. Stitch shoulder seams of BODICE FRONT and BODICE BACK sections together.
(Stitch bodice LINING sections in same manner.)



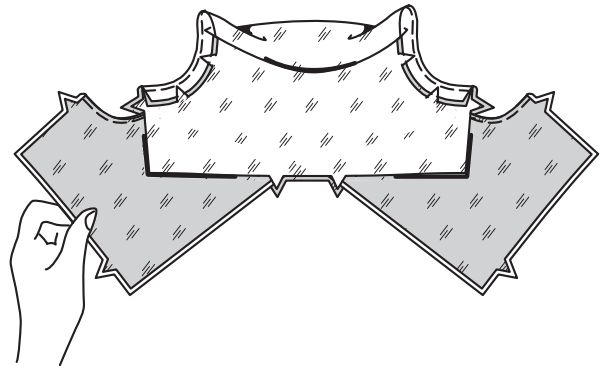
2. With RIGHT sides together, pin lining to bodice, matching centers and shoulder seams. Stitch neck and armhole edges. Trim seams; clip curves.



3. Understitch by pressing seam toward lining and stitching through seam allowances close to seam, as far as possible.



4. Turn lining to INSIDE by pulling each back through shoulders; press.



5. Open out lining at side edges. Stitch entire side seams from lower edge of bodice to edge of lining, matching armhole seams. Turn lining back in place. Press.

