

how to sew: collar with collar band



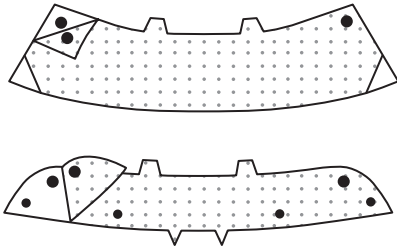
RIGHT SIDE
OF FABRIC



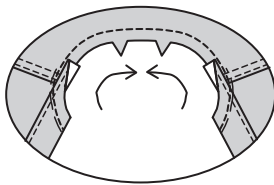
BACK SIDE
OF FABRIC

1. Pin INTERFACING to WRONG side of COLLAR BAND and COLLAR sections. Trim corners of interfacing, as shown. Fuse in place following manufacturer's directions.

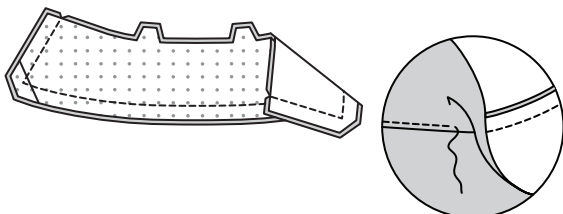
NOTE: Uninterfaced collar sections will be used as facing.



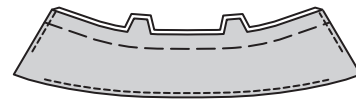
2. STAYSTITCH neck edge of garment in direction of arrows.



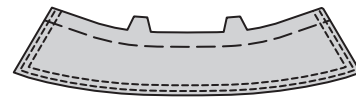
3. Stitch one interfaced and one uninterfaced COLLAR section together, leaving notched edge open. Trim. Clip corners. UNDERSTITCH by pressing facing and seam away from garment, stitching through facing and seam allowances close to seam as far as possible.



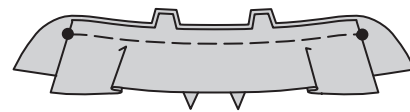
4. Turn. Press. Baste raw edges together.



5. Optional: EDGESTITCH and TOPSTITCH finished edges.



6. Pin collar to RIGHT side of interfaced COLLAR BAND section, facing side down, matching centers and large dots. Baste.



7. For facing, press under seam allowance on lower edge of uninterfaced collar band section, easing in fullness if necessary. Trim pressed seam allowance to 3/8" (1cm).



collar with collar band continued

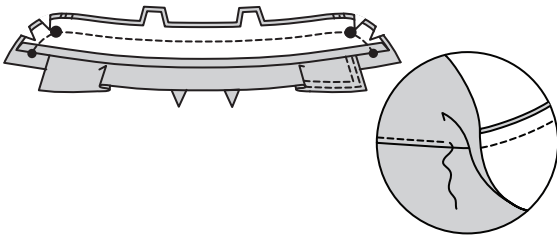


RIGHT SIDE
OF FABRIC

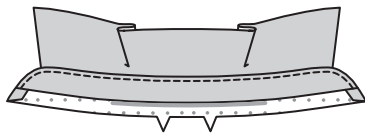


BACK SIDE
OF FABRIC

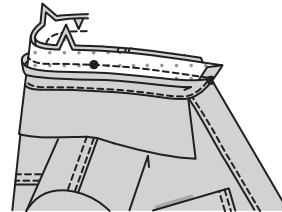
- 8.** With right sides together, pin collar band facing to collar band, over collar, matching centers and dots. Stitch, leaving lower edge open. Trim. UNDERSTITCH by pressing facing and seam away from garment, stitching through facing and seam allowances close to seam as far as possible.



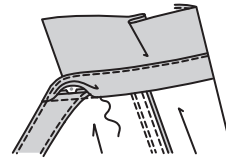
- 9.** Turn. Press.



- 10.** Pin collar band and collar to neck edge, matching centers, placing inner small dots at shoulder seams, clipping neck edge where necessary. Baste. Stitch. Trim. Press collar out, pressing seam towards collar band.



- 11.** SLIPSTITCH pressed edge over seam.



- 12.** Optional: EDGESTITCH collar band.

