

# how to sew: jacket lapel, collar and front dart



RIGHT SIDE  
OF FABRIC



BACK SIDE  
OF FABRIC



INTERFACING

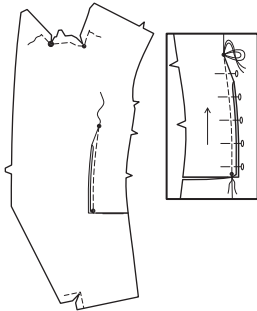


RIGHT SIDE OF  
LINING

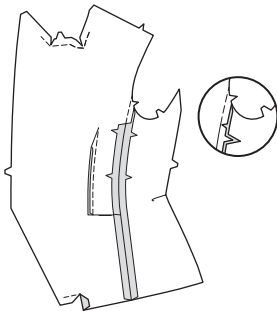


BACK SIDE OF  
LINING

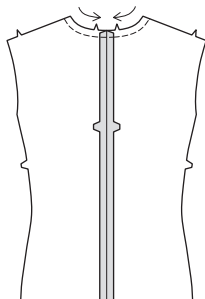
1. To reinforce upper large dot and upper small dot closest to side edge of FRONT, stitch along seam line 1/2" (1.3cm) on each side of dot, pivoting with needle in fabric at dots, as shown. Clip to reinforced dots at corner, being careful not to clip through stitching. Reinforce and clip inner corner on lower edge of front in the same manner. Clip slash line at dart seam. Make DART SEAM at waist. Press toward front.



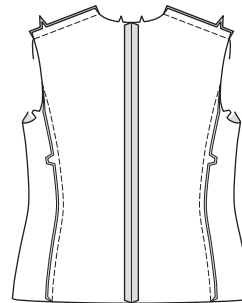
2. With RIGHT sides together and raw edges even, pin SIDE panel to front, matching notches. Stitch; press seam toward side panel. Clip seam allowance of front, above upper side front notch, as shown. Press seam open below clip. Press.



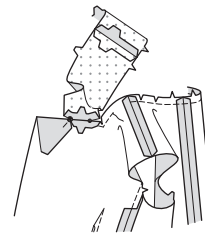
3. STAY-STITCH neck edge of BACK in direction of arrows. Stitch center back seam.



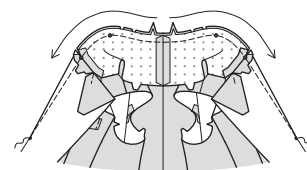
4. Stitch front to back at side back and shoulder edges.



5. Apply INTERFACING to UNDER COLLAR sections. Stitch center back seam. With RIGHT sides together, pin front edge of under collar to jacket, matching notches, small and large dots. Stitch between small and large dots. Press seam open. Do Not trim this seam now. For best results, this seam will be trimmed later. Clip back neck edge of jacket to stay-stitching along curves.



6. To stitch remaining neck edge and make dart in front, on INSIDE, with RIGHT sides together bring stitching lines together, matching centers back and small dots, placing inner small dot at shoulder seam. Stitch each side from center back to point of dart along stitching lines in direction of arrows.



# jacket lapel, collar and front dart

## continued



RIGHT SIDE  
OF FABRIC



BACK SIDE  
OF FABRIC



INTERFACING

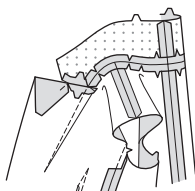


RIGHT SIDE OF  
LINING

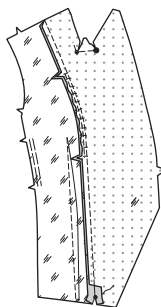


BACK SIDE OF  
LINING

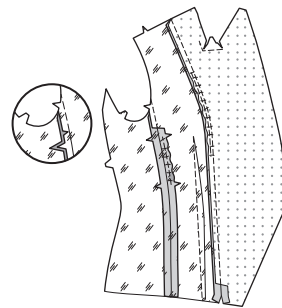
7. Trim neck seam between darts; clip curves. Press seam open, pressing dart away from center.



8. Apply INTERFACING to FRONT FACING. To reinforce upper large dot and small dot at neck edge, stitch along seam line 1/2" (1.3cm) on each side of dots, pivoting with needle in fabric at dots, as shown. Clip to reinforced dots, being careful not to clip through stitching. EASE side front edge between notches. EASE underarm edge of front LINING. Make DART SEAM; press toward front. With RIGHT sides together and raw edges even, pin front facing to FRONT LINING, matching notches, pulling up ease stitches to fit. Stitch from shoulder edge to small dot, back-stitching at dot to reinforce the seam. Clip facing seam allowance 1" (2.5cm) above small dot. Press seam toward lining above clip.



9. Pin side panel lining sections to front lining, matching notches, pulling up ease stitches to fit. Stitch; press seam toward side panel. Clip seam allowance of front, above upper side front notch, as shown. Press seam open below clip.



10. STAY-STITCH neck edge of BACK LINING in direction of arrows. Stitch center back seam. To make a pleat at neck edge, bring stitching lines together with RIGHT sides together, stitch along stitching line. Press center back seam and pleat to one side. Pin side panel lining sections to back lining, matching notches. Stitch. Stitch front to back at shoulder edges.



# jacket lapel, collar and front dart

## continued



RIGHT SIDE  
OF FABRIC



BACK SIDE  
OF FABRIC



INTERFACING

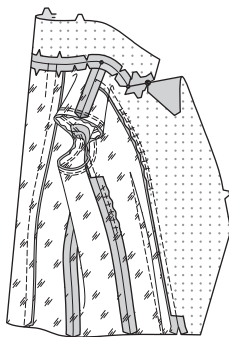


RIGHT SIDE OF  
LINING

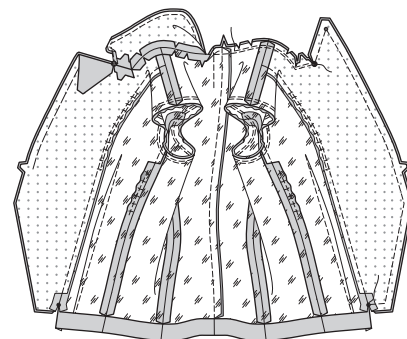


BACK SIDE OF  
LINING

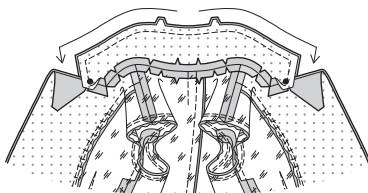
- 11.** Apply INTERFACING to UPPER COLLAR. Clip neck edge of back lining to stay-stitching along curves. With RIGHT sides together, pin upper collar to neck edge of front facing and lining, matching centers, small and large dots, placing inner small dots at shoulder seams. Stitch between large dots, pivoting with needle in fabric at inner corners. Trim back neck seam between shoulder seams; clip curves. Press seams open.



lower edge, easing front facing to fit, being careful not to catch in collar at large dot; back-stitch at lower small dot to reinforce seam. Trim seams and corners. Stitch seam allowances of facing and lining to jacket together at neck edge between the large dots. Trim seam and corners.

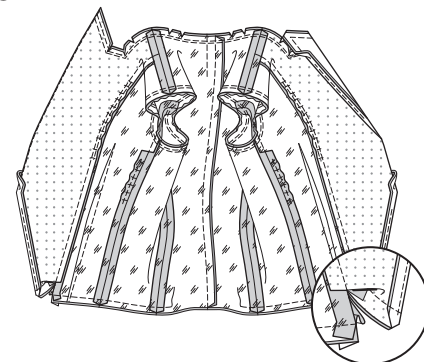


- 12.** With RIGHT sides together, pin upper collar to under collar, matching centers, small and large dots. Turn neck seam allowances down. Hand-baste upper edge of upper and under collar together between large dots, working basting stitches from center back to large dots, easing upper collar to fit. Stitch as basted from center back to large dot, over lapping a few stitches at center back. Anchor thread ends securely at large dots. Trim seam and corners.



- 13.** Turn collar to OUTSIDE between lining and jacket, turning up neck seam allowance. Turn up lapel and lapel facing. Pin front facing to jacket, matching small and large dots. Stitch from large dot to small dot on

- 14.** UNDERSTITCH lower edge of facing, and underside of lapel, as shown. With RIGHT sides together, pin lower edges of jacket and lining together, matching centers and seams. Stitch lower edges between side front seams in 1/2" (1.3cm) seam, leaving an opening for turning.



- 15.** With the WRONG side of coat facing you, turn up hem on lower edge of coat. Catch-stitch coat hem in place, being careful not to catch in opening edge of lining in back.

