

SEWING TUTORIAL

# how to sew: a shawl collar



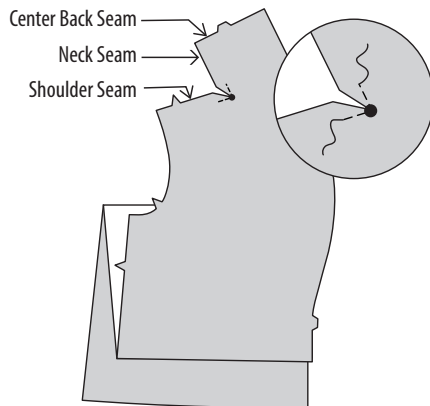
RIGHT SIDE  
OF FABRIC



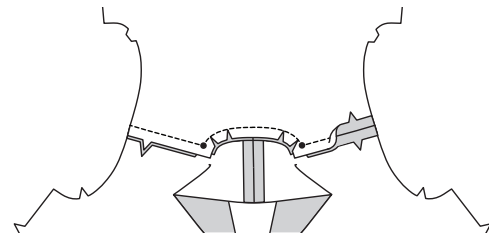
BACK SIDE  
OF FABRIC

1. REINFORCE shoulder edge of FRONT through small dot. Clip to dot.

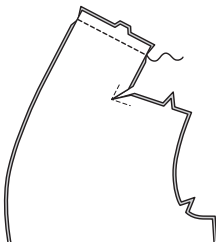
**NOTE:** Illustration labeled for future reference.



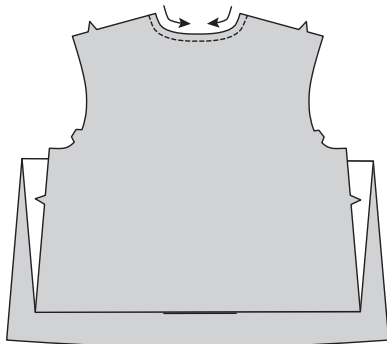
4. Pin front to back at shoulders, matching notches and dots. Pin back neck edges together, clipping back neck edge as necessary. Baste. Stitch, pivoting at small dots. Press shoulder seams open and neck seam allowances toward front.



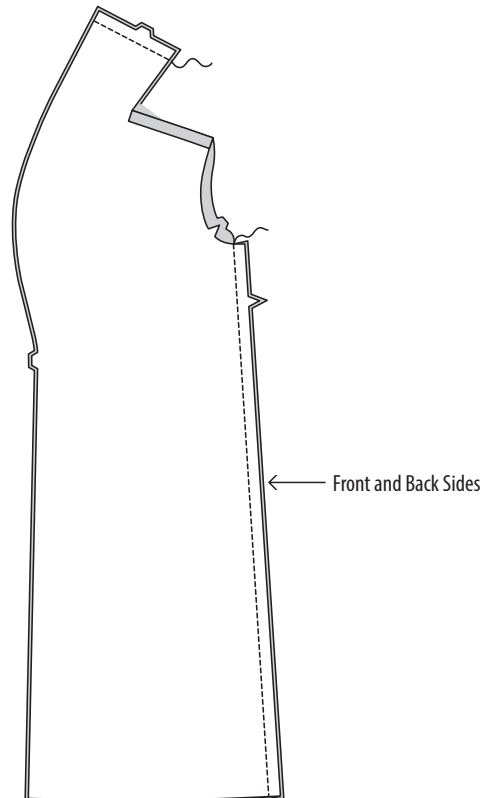
2. Stitch front sections together at center back.



3. STAYSTITCH neck edge of BACK in direction of arrows.



5. Stitch front to back at sides.



# shawl collar continued

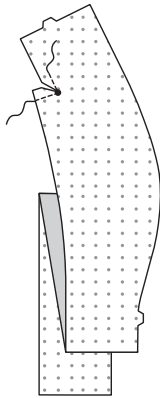


RIGHT SIDE  
OF FABRIC

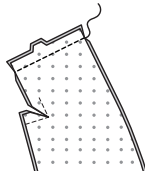


BACK SIDE  
OF FABRIC

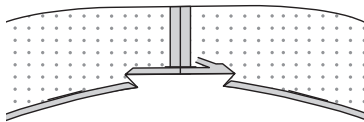
6. Apply INTERFACING to FRONT FACING. REINFORCE shoulder edge of front facing through small dot. Clip to dot.



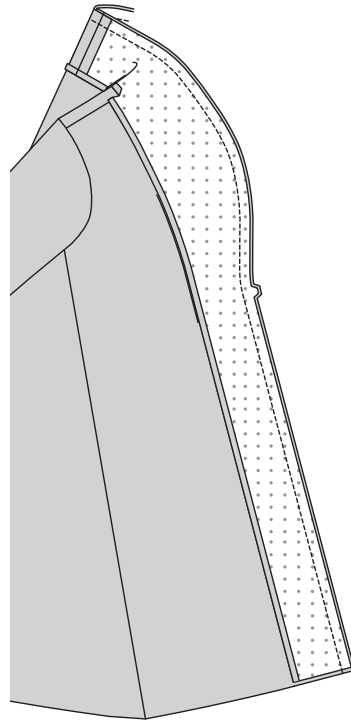
7. Stitch front facing sections together at center back.



8. Press under seam allowances on neck and inner edges of front facing, as shown. Trim pressed seam allowances to 3/8" (1cm).



9. With RIGHT sides together, pin facing to robe, matching centers and notches. Stitch front opening and collar edges.



10. Turn facing to INSIDE. SLIPSTITCH pressed edge to neck seam. Tack facing to shoulder seam.

