

SEWING TUTORIAL

how to: work with stripes

a variety of ways to use stripes

Working with striped fabric can be a fun way to add interesting details to your garment.

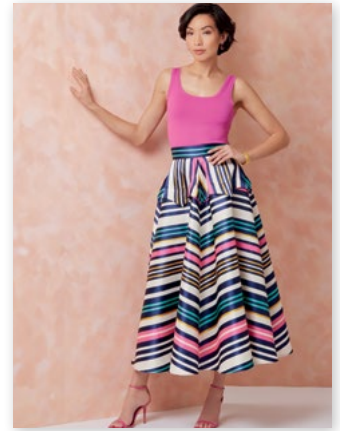
Experiment with using stripes in different ways.

- ☞ Some striped garments require all the pieces to be cut in the same direction.
- ☞ Some intentionally have pieces cut in different directions, such as a dress with a horizontally striped bodice and vertically striped skirt.
- ☞ Other times you will need to plan for a stripe to be mirrored or mitered, or a combination of these design details.

See examples to the right.



Stripes in one direction: V2119, M8557, M8281



Stripes in horizontal and vertical direction: S3129, B6943, V2116



Stripes in mix of straight, horizontal, mirrored, and bias directions: S3138, S3098, M8448

shopping for fabric

When shopping for fabric, keep in mind that matching stripes may require extra yardage; how much extra will depend on whether the design was intended for stripes, as well as the size and the repeat of the stripes. For small stripes estimate ¼ - ½ yard (0.25m – 0.5m) extra, for bold stripes estimate ½ - 1 yard (0.5m - 1m) extra.

Review the Suggested Fabrics - sometimes a design requires a specific type of striped fabric to achieve the look, for example S3131 specifies 1" Vertical Stripes. If you make this garment using something other than a 1" vertical stripe, you will end up with a different aesthetic from what is shown, which you may be fine with but, if you want your garment to look exactly like the example, follow the fabric and cutting layouts. (See more in the next section.)



Actual pattern visuals.

S3131 Average Moins Facile

MISSES' AND WOMEN'S DRESS IN THREE LENGTHS

Suggested Fabrics: Cotton Blends, Linen, Poplin, Seersucker. **C** in 1" Vertical Stripes. Lining: Cotton Blends, Lining Fabrics. Interfacing: Lightweight Fusible.

Notions: A,B,C: One invisible zipper, 14" (36cm) for Misses, 16" (41cm - cut to fit) for Women, two 5/8" (1.3cm) buttons.

Sizes	10	12	14	16	18	20W	22W	24W	26W	28W
European	36	38	40	42	44	46	48	50	52	54

BODY MEASUREMENTS: Select pattern size based on body measurements

	32½	34	36	38	40	42	44	46	48	50	Ins.
Bust	32½	34	36	38	40	42	44	46	48	50	Ins.
Waist	25	26½	28	30	32	35	37	39	41½	44	"
Hip-9" below waist	34½	36	38	40	42	44	46	48	50	52	"
Back-neck to waist	16	16¼	16½	16¾	17	17¼	17½	17¾	17¾	17¾	"

Lining A,B,C 45" ½ ½ ½ ½ ¾ ¾ ¾ ¾ ¾ ¾ Yd.

Interfacing 20" ¾ yd.

Dress A 45" 1½ 1½ 1½ 1½ 1¾ 2¼ 2¼ 2¼ 2¼ 2¼ Yds.
60" 1¾ 1¾ 1¾ 1¾ 1¾ 1¾ 1¾ 2 2 2 "

Dress B 45" 1¾ 1¾ 1¾ 1¾ 1¾ 1¾ 1¾ 1¾ 1¾ 1¾ Yds.
60" 1 1 1¾ 1¾ 1¾ 1¾ 1¾ 1¾ 1¾ 1¾ 1¾ "

Contrast (Bodice Front and Back, Shoulder Strap)
45,60" ¾ ¾ ¾ ¾ ¾ ¾ ¾ ¾ ¾ ¾ Yd.

Dress C 45" 2½ 2½ 2½ 3 3¼ 3¼ 3¼ 3¼ 3¼ 3¼ Yds.
60" 1¾ 1¾ 2½ 2½ 2½ 2½ 2½ 3 3¾ "

FINISHED GARMENT MEASUREMENTS (Includes Design and Wearing Ease)

A,B,C Bust	34½	36	38	40	42	43½	45½	47½	49½	51½	Ins.
A,B,C Bust	34½	36	38	40	42	43½	45½	47½	49½	51½	Ins.
A,B,C Waist	26	27½	29½	31½	33½	36	38	40	42	44	"

Width, lower edge
Dress A,B,C 52 53½ 55½ 57½ 59½ 74 76 78 80 82 Ins.

Finished back length from base of neck
Dress A 36 36¼ 36½ 36¾ 37 38 38¼ 38¾ 38¾ 39 Ins.
Dress B 41 41¼ 41½ 41¾ 42 43 43¼ 43¾ 43¾ 44 "

Dress C 54 54¼ 54½ 54¾ 55 56 56¼ 56½ 56¾ 57 "

*with nap **without nap

ROBE EN TROIS LONGUEURS POUR JEUNES FEMMES ET FEMMES

Tissus Conseillés: Cottonnades, Toile de lin, Popeline, Seersucker. **C** en rayures verticales de 2,5cm. Doublure: Cottonnades, Tissus à doublure. Entourage: Thermocollant léger.

Merciérie: A,B,C: 1 fermeture à glissière invisible: 36m pour jeunes femmes, 41cm (coulée pour ajuster) pour femmes, 2 boutons de 1,3cm.

Tailles	10	12	14	16	18	20W	24W	26W	28W
Françaises	38	40	42	44	46	48	50	52	54
Européennes	36	38	40	42	44	46	48	50	52

MESURES DU CORPS: Choisissez la taille du patron basée sur les mesures du corps

Poitrine	83	87	92	97	102	107	112	117	122	127	cm
Poitrine	83	87	92	97	102	107	112	117	122	127	cm
Taille	64	67	71	76	81	89	94	99	105	112	"
Hanches (23cm au-dessous de la taille)	88	92	97	102	107	112	117	122	127	132	cm
Dos de cou à la taille	40,5	41,5	42	42,5	43	44	44,5	45	45	45	"

Dos de cou à la taille
Doublure A,B,C 115cm** 0,5 0,5 0,5 0,6 0,7 0,7 0,7 0,7 0,7 0,7 m
Entourage 51cm - 0,7m

Robe A 115cm* 1,4 1,4 1,5 1,7 1,7 2,1 2,1 2,1 2,1 2,1 m
150cm* 1,1 1,1 1,4 1,4 1,4 1,4 1,4 1,4 1,8 1,8 "

Robe B 115cm* 1,6 1,6 1,6 1,6 1,6 1,6 1,6 1,6 1,6 1,6 m
150cm* 0,9 0,9 1,6 1,6 1,6 1,6 1,6 1,6 1,6 1,6 "

Contraste (Corsage devant et dos, Bretelle d'épaule)
115,150cm* 0,7 0,7 0,7 0,7 0,7 0,7 0,7 0,7 0,7 0,7 m

Robe C 115cm* 2,3 2,3 2,3 2,7 2,9 3,0 3,0 3,1 3,1 3,1 m
150cm* 1,6 1,6 2,3 2,3 2,3 2,3 2,3 2,3 2,7 2,9 "

MESURES DES VÊTEMENTS FINI (Moiti et aisance de port compris)

A,B,C Poitrine	88	91	97	102	107	110	116	121	126	131	cm
A,B,C Poitrine	88	91	97	102	107	110	116	121	126	131	cm
A,B,C Taille	66	70	75	80	85	91	97	102	107	112	"

Largeur à l'ourlet
Robe A,B,C 132 136 141 146 151 188 193 198 203 208 cm
Longueur finie - dos, votre nuque à l'ourlet
Robe A 91 92 93 93 94 97 97 98 98 99 cm
Robe B 104 105 105 106 107 109 110 110 111 112 "

Robe C 137 138 138 139 140 142 143 144 144 145 "

*avec sens **sans sens

Suggested Fabrics: Cotton Blends, Linen, Poplin, Seersucker. **C** in 1" Vertical Stripes. **Lining:** Cotton Blends, Lining Fabrics. **Interfacing:** Lightweight Fusible.

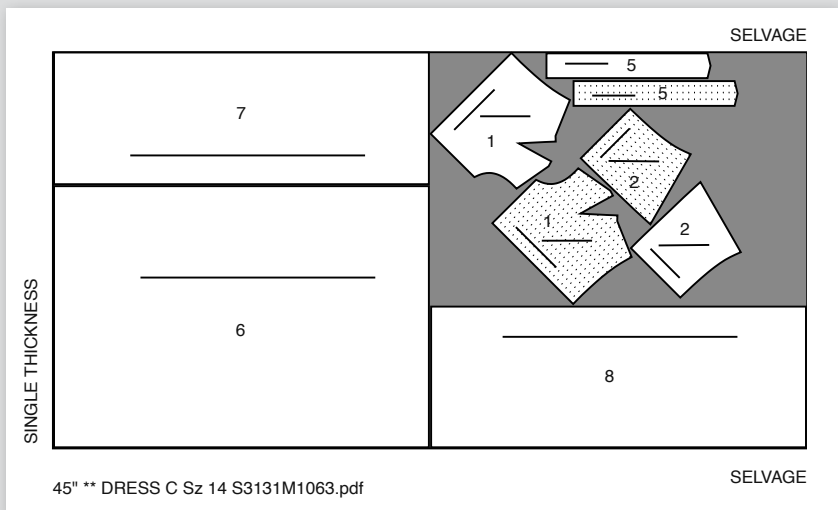
cutting and matching stripe fabric

CUTTING LAYOUTS

With most fabrics, follow the fabric suggestions and cutting layouts. (See more in the next section.)

However, stripes require special planning. When working with striped fabric you will need to pay close attention to the direction in which each pattern piece is placed on the fabric.

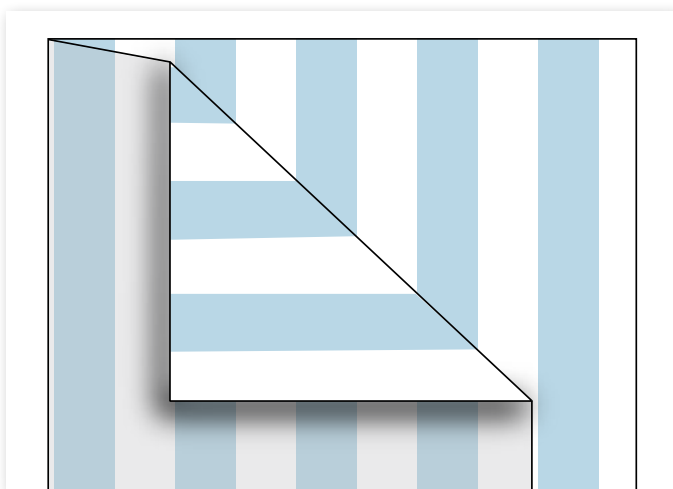
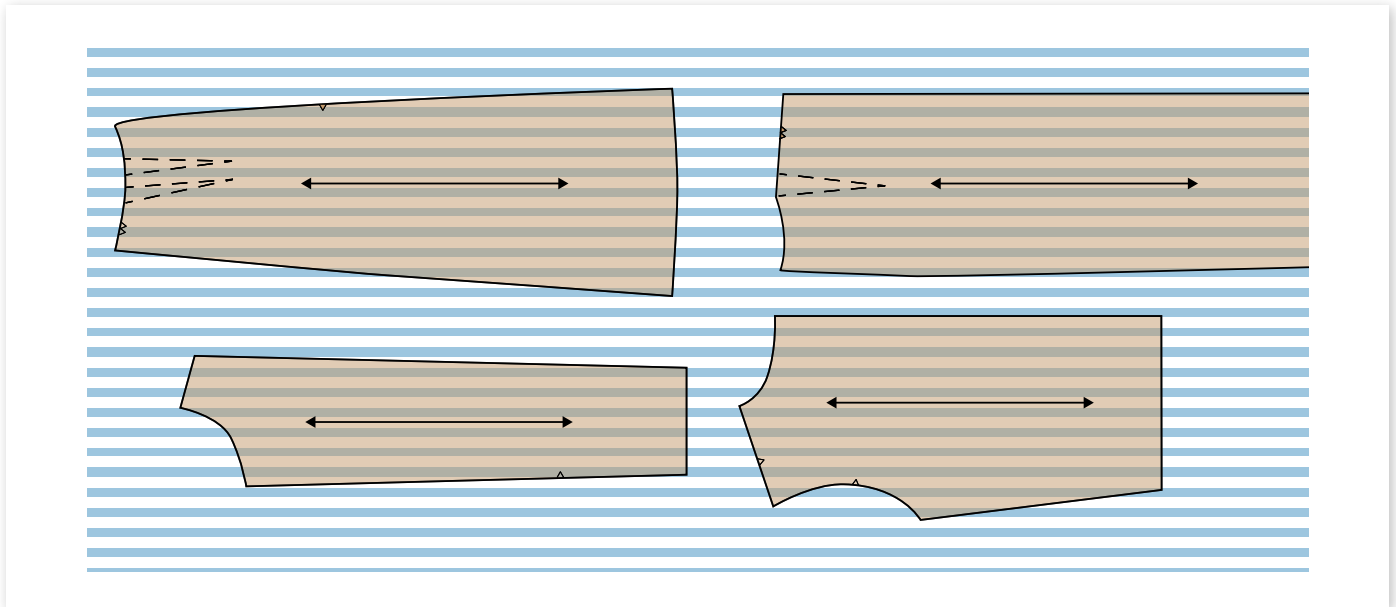
Use the "with nap" section of the cutting layouts and, follow the tips on the next page to be able to match the stripes precisely.



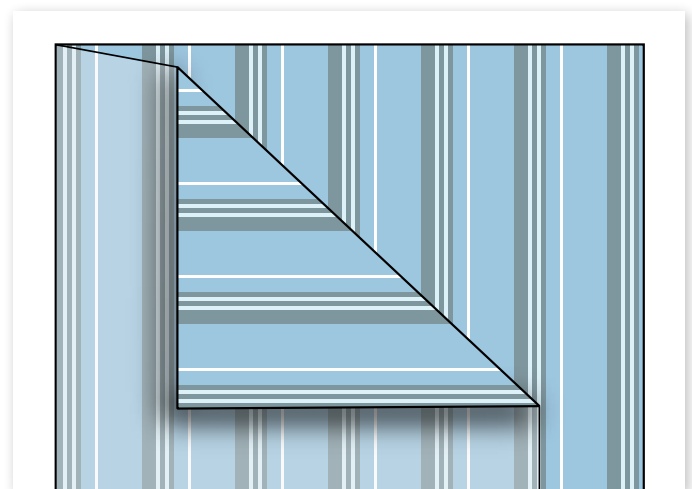
Actual cutting layout for fabrics "with nap". Pattern S3131 instruction sheet.

stripe matching overview

- ✂ Garments made from bold stripes look best when they match at the seams, a key area to pay attention to is the side seams of the bodice and sleeves.
- ✂ The general rule for matching stripes is to match vertical stripes at horizontal seams, and horizontal stripes at vertical seams. Also pay attention to matching the vertical stripes on the center back of a collar to the center back of the garment.
- ✂ More complex garments may have additional seams where you might want the stripes to match.
- ✂ Some details cannot be matched even for a skilled sewist. These include raglan seams, shoulder seams, darts, the back of an armhole, gathered seams, and circle skirts.
- ✂ Before you begin pinning your pattern pieces, determine if the fabric you are working with is an **Even Stripe** or an **Uneven Stripe**.



EVEN STRIPES: the fabric bars will match when the fabric is folded along the main bar.

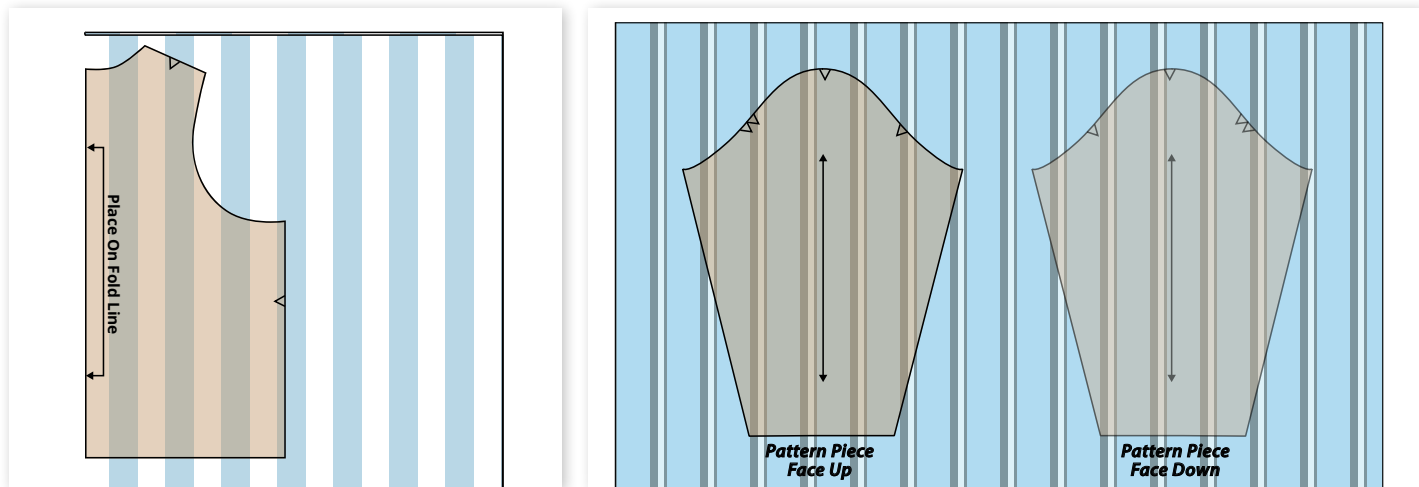


UNEVEN STRIPE: the fabric bars will not match when the fabric is folded along the Main bar.

- ✂ With an even stripe you may work with folded fabric if you align and pin the bars first. With uneven stripes it will be easiest to work with a single thickness of fabric placed right side up.
- ✂ Mark the seamlines on your pattern pieces (make sure to pay attention to the seam allowance width, most garment patterns have $\frac{5}{8}$ " seam allowance). Remember you are matching at the seamline NOT the raw edge.

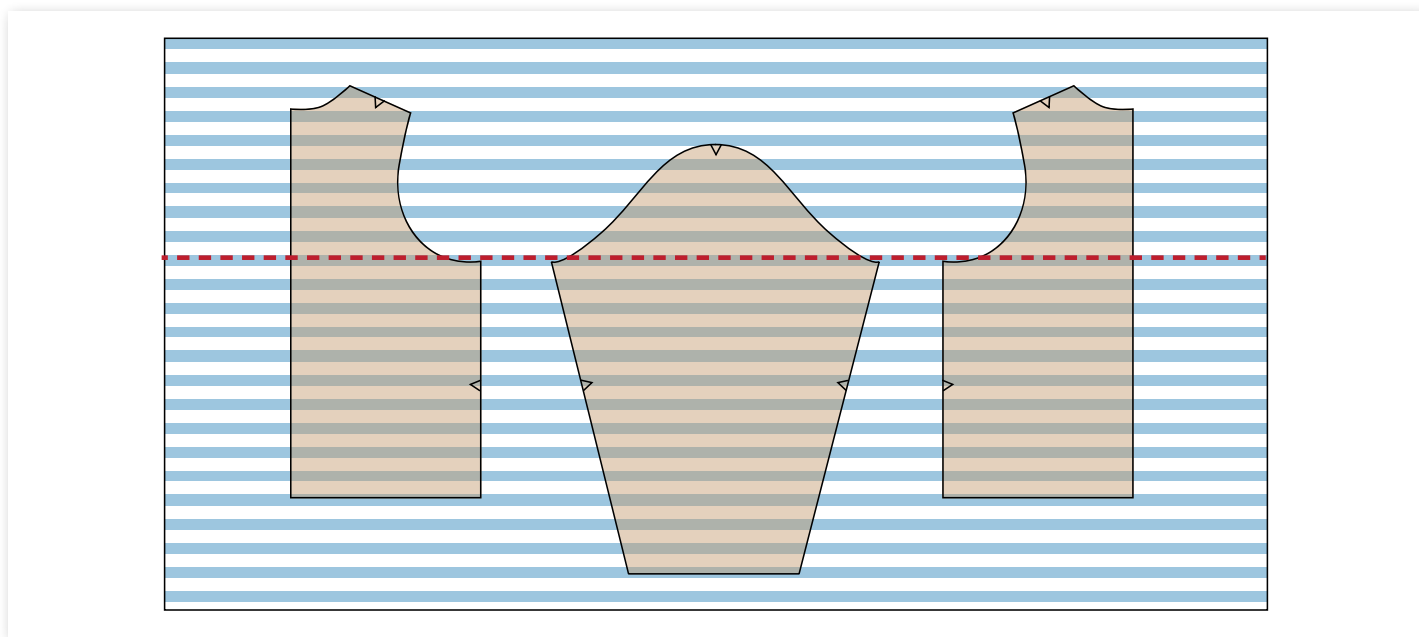
vertical stripes

- ✂ To layout a vertical even striped pattern so that it goes around the body, fold the fabric at the center of a main stripe or stripe group. Position the pattern pieces that must be cut on the fold, then cut the remaining pieces from a single layer of fabric.
- ✂ To layout a vertical uneven striped pattern, be sure to place sleeves so that the main stripe or stripe group moves in the same direction on both sleeves.



horizontal stripes

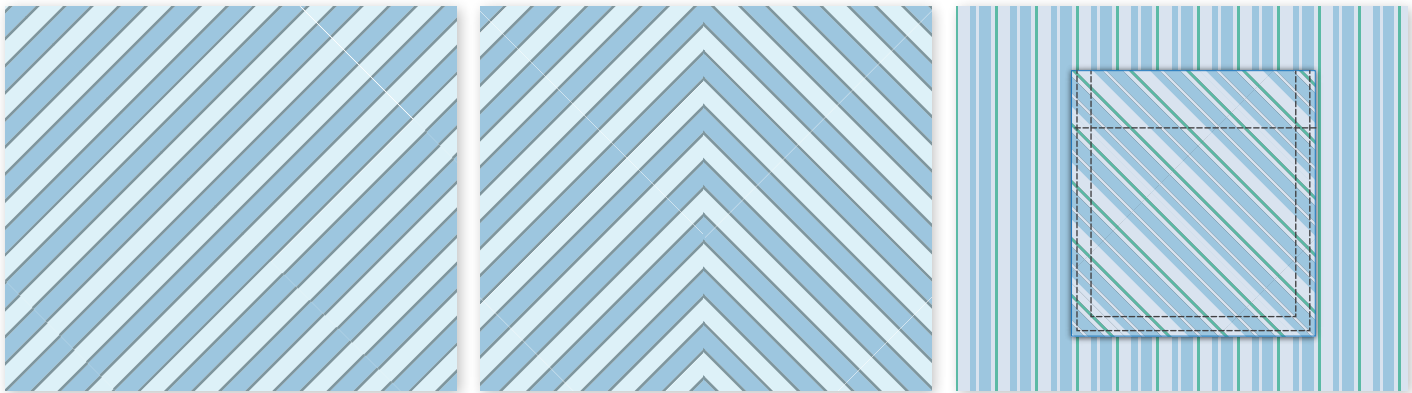
- ✂ When you pin the front bodice pattern piece to the fabric, line up the underarm point with the top or bottom of a stripe. Be sure that the grain line is parallel to the selvages of the fabric or to the bars of the stripe. Then replicate this position for your back bodice. Finally place the sleeve with both underarm points on the same stripe as the bodice pieces.
- ✂ The image below shows this layout with all pieces placed at the top of a blue stripe. If you cannot fit everything on the width of your fabric, you can place the pattern pieces underneath each other, but you will need to find the same stripe position on the repeated stripes. Tracing the stripe onto the pattern piece will help with this.



- ✂ For a pattern cut on the fold, pin pattern to single layer of fabric and mark the foldline onto the fabric. Cut pattern up to the foldline but not along the fold. Unpin pattern and flip with wrong side up along the foldline, re-pin and cut out remaining half. Or tracing the 1/2 pattern onto tissue and taping the two halves to get the whole piece works also.

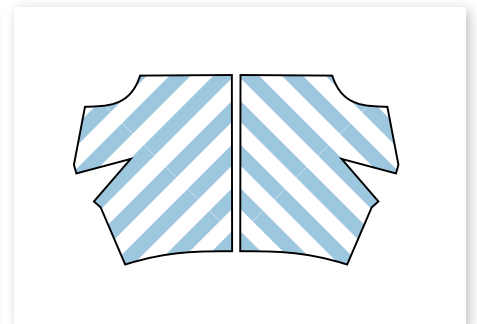
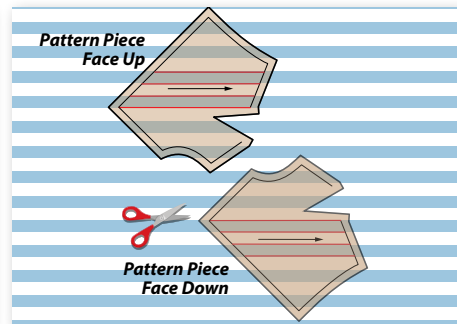
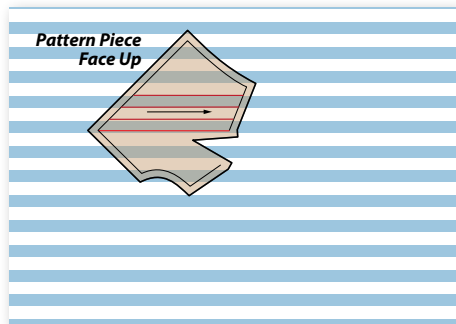
bias stripes

- ✂ Cutting some pieces on the bias will make a vertical or horizontal stripe appear on a diagonal.
- ✂ Bias cut pieces can be mirrored to create a mitered appearance.
- ✂ Smaller pieces such as pockets, yokes, plackets, collar and cuffs, and godets often look good cut on the bias.



TIPS for cutting bias stripes to give a mirrored effect:

- ✂ Draw a placement line across the pattern parallel to the grainline.
- ✂ Pin pattern, right side up to a single layer of fabric with the placement line along the stripe. Cut out pattern.
- ✂ Pin tissue to a single layer of fabric, face down, placing line along matching stripes, making sure stripes will match at the seamlines. Cut out pattern.



NOTE: This will not work with uneven stripes.

sewing striped fabric

Once your fabric has been cut out some things to keep in mind are:

- ✂ Place pins at 90 degrees to the side seam to stop the fabric from shifting as it moves under the machine or use wonder tape or fabric glue instead of pins to reduce the chance of slippage.
- ✂ Pin both the upper and lower edges of the stripes together if they are especially wide, this will help ensure the stripe is matched.
- ✂ Remove the pins at the last minute as they approach the machine, working slowly and steadily.
- ✂ Consider hand basting seams before moving to your sewing machine.
- ✂ You might find it helpful to invest in a walking foot, which ensures that slippery, stretchy, and other tricky fabrics are fed evenly through your sewing machine.

Be creative, even if a pattern is not shown in a striped fabric, it does not mean you can't try it!
With a little bit of patience, you will be sewing expertly matched striped garments.

Simplicity.com has a wide selection of patterns for you to try out in striped fabric!

