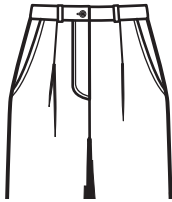


sewing a fly front zipper

right front opening

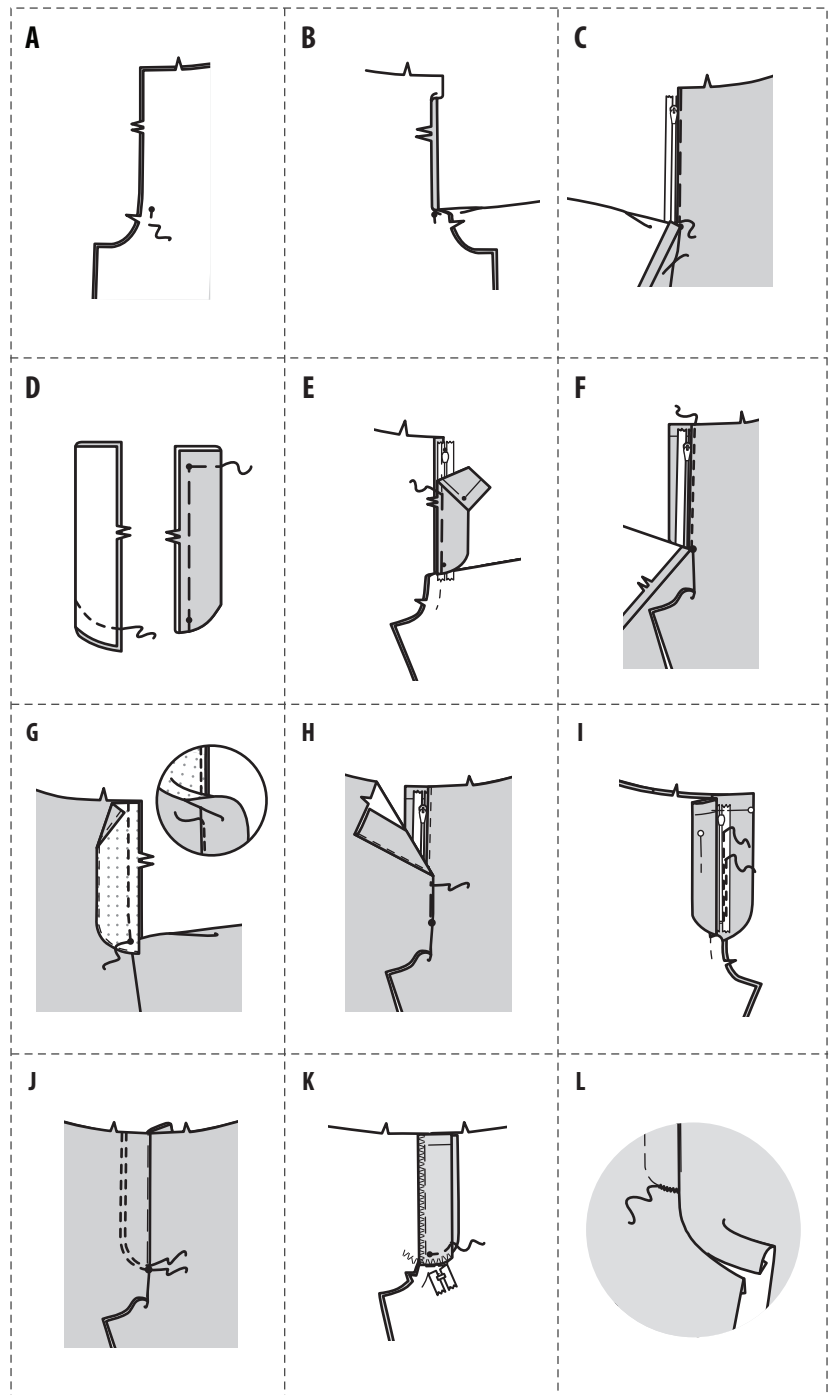


RIGHT SIDE OF FABRIC



BACK SIDE OF FABRIC

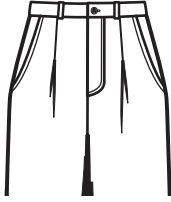
- A. Stitch front sections together at center front between large dot and notch.
- B. Turn in left front opening edge along foldline; press.
- C. Place closed zipper (face up) under left front opening edge, having pressed edge close to zipper teeth and zipper stop at small dot. Using a zipper foot, baste close to pressed edge.
- D. With right sides together, fold left fly along foldline. Stitch lower edge. Trim. Turn. Press. Baste raw edges.
- E. On inside, pin left fly to left front opening edge (over zipper), matching notches and small dots, having raw edges even. Baste along previous basting for zipper.
- F. On outside, using a zipper foot, stitch close to pressed edge of front through all layers.
- G. FINISH outer edge of right fly facing. Pin fly facing to right front opening edge, matching notches and large dots. Stitch, ending at large dot. Trim. UNDERSTITCH fly facing. Turn facing to inside.
- H. Lap right front over left, matching centers. Baste close to edge through all thicknesses.
- I. Pin left fly out of the way. Open out fly facing. Pin remaining zipper tape to fly facing, keeping right front free. Using a zipper foot, stitch in place close to zipper teeth and along center of zipper tape.
- J. Turn facing down. On outside, stitch right front along stitching lines, keeping left fly free.
- K. Turn left fly back in place. On inside, hand tack fly and facing together at lower edge, as shown. Trim away excess zipper tape even with lower edge of fly, if needed.
- L. If desired, on outside, machine-stitch a bar tack across lower end of fly through all thicknesses.



SEWING TUTORIAL

sewing a fly front zipper

left front opening



RIGHT SIDE
OF FABRIC



BACK SIDE
OF FABRIC

- A. Stitch front sections together at center front between large dot and notch.
- B. Turn in right front opening edge along foldline; press.
- C. Place closed zipper (face up) under right front opening edge, having pressed edge close to zipper teeth and zipper stop at small dot. Using a zipper foot, baste close to pressed edge.
- D. With right sides together, fold right fly along foldline. Stitch lower edge. Trim. Turn. Press. Baste raw edges.
- E. On inside, pin right fly to right front opening edge (over zipper), matching notches and small dots, having raw edges even. Baste along previous basting for zipper.
- F. On outside, using a zipper foot, stitch close to pressed edge of front through all layers.
- G. FINISH outer edge of left fly facing. Pin fly facing to left front opening edge, matching notches and large dots. Stitch, ending at large dot. Trim. UNDERSTITCH fly facing. Turn facing to inside.
- H. Lap left front over right, matching centers. Baste close to edge through all thicknesses.
- I. Pin right fly out of the way. Open out fly facing. Pin remaining zipper tape to fly facing, keeping left front free. Using a zipper foot, stitch in place close to zipper teeth and along center of zipper tape.
- J. Turn facing down. On outside, stitch left front along stitching lines, keeping right fly free.
- K. Turn right fly back in place. On inside, hand tack fly and facing together at lower edge, as shown. Trim away excess zipper tape even with lower edge of fly, if needed.
- L. If desired, on outside, machine-stitch a bar tack across lower end of fly through all thicknesses.

