



PDF PATTERNS

V1784

>> MISSES'
SHIRTS

02

PIECES AND
NOTIONS

03

CHARTS

05

CUTTING
LAYOUTS

08

PATTERN
MARKINGS

09

SEWING
INSTRUCTIONS



VOGUE
PATTERNS®

SKILL LEVEL: AVERAGE

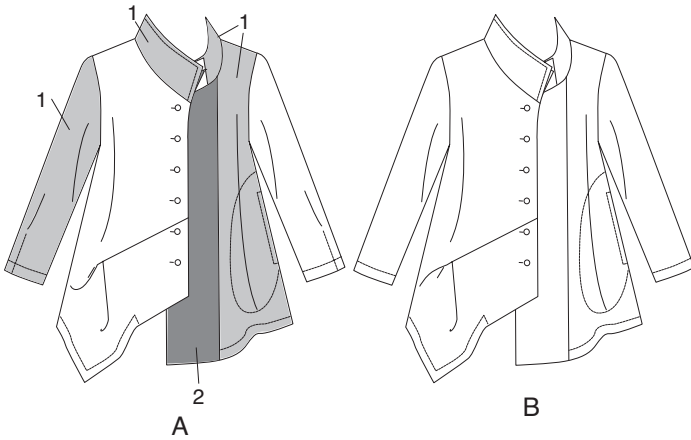
Find the Perfect Fit!

THINGS YOU NEED:

- > Six 5/8" Buttons.

SUGGESTED FABRICS:

- > Cotton Shirting, Linen, Taffeta, Poplin
- > Interfacing: Fusible.



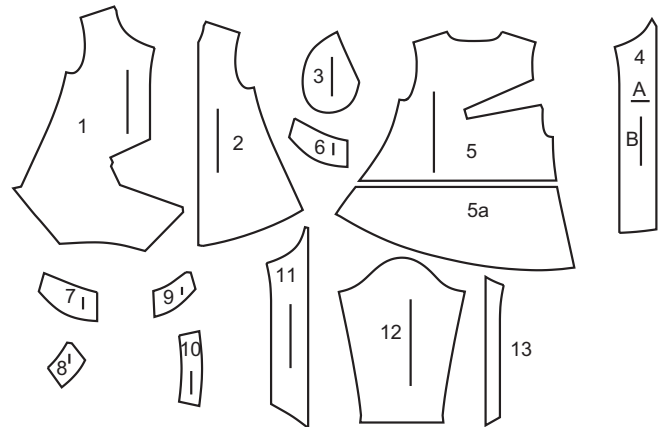
Your printed tile pieces should be assembled before you move on to this step!

PIECES (13)

SHIRT A, B

- 1 RIGHT FRONT
- 2 LEFT SIDE FRONT
- 3 POCKET
- 4 LEFT FRONT
- 5 BACK
- 5A EXTENSION
- 6 COLLAR FRONT
- 7 COLLAR FRONT
- 8 COLLAR FRONT
- 9 COLLAR FRONT
- 10 BACK COLLAR
- 11 RIGHT FRONT FACING
- 12 SLEEVE

13 GUIDE FOR
BUTTONHOLES



CHARTS

YARDAGE CHARTS

SIZES	XS (4-6)	S (8-10)	M (12-14)	L (16-18)	XL (20-22)	XXL (24-26)	
SHIRT A							
45,60"/**	1½	1½	1½	1½	1½	1¼	yds.
115, 150cm*/**	1.1	1.1	1.1	1.1	1.1	1.2	m.
CONTRAST 1A							
45,60"/**	1	1	1	1	1½	1½	yds.
115, 150cm*/**	1.0	1.0	1.0	1.0	1.0	1.1	m.
CONTRAST 2A							
45,60"/**	1¾	1¾	1¾	1½	1½	1½	yds.
115, 150cm*/**	1.3	1.3	1.3	1.3	1.4	1.4	m.
SHIRT B							
45"/**	2¾	2¾	2⅞	3¼	3¼	3⅜	yds.
115cm*/**	2.6	2.6	2.7	2.9	3.0	3.0	m.
60"/**	2	2	2⅜	2½	2½	2½	yds.
150cm*/**	1.9	1.9	2.2	2.2	2.3	2.3	m.
FUISIBLE INTERFACING A,B - 20"/** 1 yd. 51cm** - 1.0m.							

BODY MEASUREMENTS

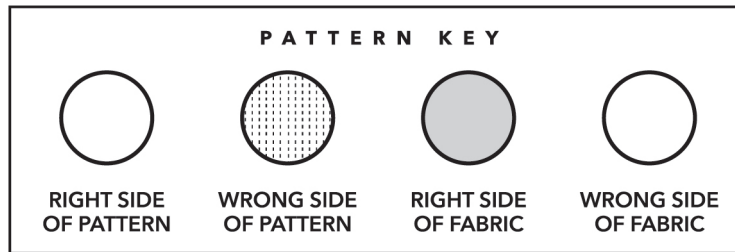
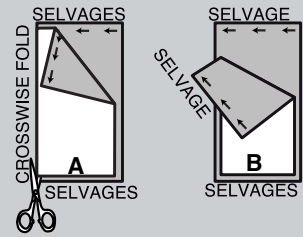
SIZES	XS	S	M	L	XL	XXL	
	(4-6)	(8-10)	(12-14)	(16-18)	(20-22)	(24-26)	
BUST	29½-30½	31½-32½	34-36	38-40	42-44	46-48	in.
	75-77	80-83	87-92	97-102	107-112	117-122	cm.
WAIST	22-23	24-25	26½-28	30-32	34-37	39-41½	in.
	56-58	61-64	67-71	76-81	87-94	99-105	cm.
HIP	31½-32½	33½-34½	36-38	40-42	44-46	48-50	in.
	80-83	85-88	92-97	102-107	112-117	122-127	cm.
BACK WAIST LENGTH	15¼-15½	15¾-16	16¼-16½	16¾-17	17¼-17½	17¾-18	in.
	39-39.5	40-40.5	41.5-42	42.5-43	44-44.5	45-45.5	cm.

FINISHED GARMENT MEASUREMENTS

SIZES	XS	S	M	L	XL	XXL	
	(4-6)	(8-10)	(12-14)	(16-18)	(20-22)	(24-26)	
BACK LENGTH FROM BASE OF NECK							
SHIRT A,B	29¼	29¾	30¼	30¾	31¼	31¾	in.
	74	75.5	76.5	78	79	81	cm.

CUTTING AND MARKING

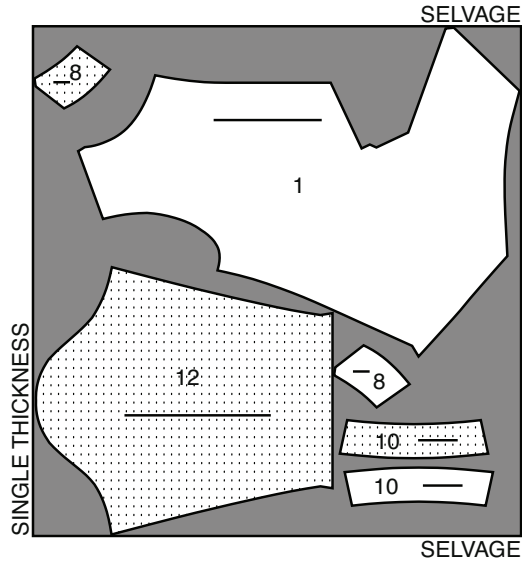
- > **SHRINK FABRIC** if not labeled pre-shrunk. Press.
- > **CIRCLE LAYOUT** for View, Size, Fabric Width.
- > Use **WITH NAP** layout for fabrics with one-way designs, nap, pile or surface shading. Because most knits have surface shading, a with nap layout is used.
- > For **DOUBLE THICKNESS (WITH FOLD)**, fold fabric with right sides together.
- > ***DOUBLE THICKNESS (WITHOUT FOLD)**, for fabrics with nap, fold fabric crosswise, right sides together. Mark as shown. Cut along crosswise fold of fabric (A). Turn upper layer 180° so arrows go in same direction and place over lower layer, right sides together (B).
- > For **SINGLE THICKNESS**, place fabric right side up. (For Fur Pile fabrics, place pile side down.)



- > Before **CUTTING**, place all pieces on fabric according to layout. Pin.
(Layouts show approximate position of pattern pieces; position may vary according to your pattern size.)
- > ★ Cut other pieces first, allowing enough fabric to cut this piece. Open fabric. Cut piece on single layer of fabric with piece face up on right side of fabric.
- > Cut accurately, cutting notches outward.
- > Before removing pattern, **TRANSFER MARKINGS** and lines of construction to **WRONG SIDE** of fabric, using Pin and Chalk Pencil method or Tracing Paper and Dressmaker Wheel. Markings needed on right side of fabric should be thread traced.
- NOTE:** Broken-line boxes (a! b! c!) in layouts represent pieces cut by measurements provided.
- > Prewash your fabric using a method that's suitable for the fabric type.
- > Fold fabric with right sides together, matching **SELVAGES**.
- > Pin your pattern pieces to the fabric as shown below and cut them out using a sharp pair of dressmaker's shears.

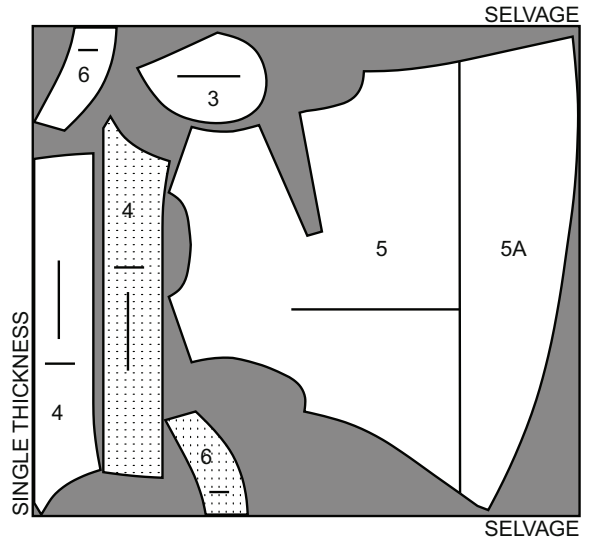
1 SHIRT A

PIECES: 1,8,10,12
 45"60" (115,150 CM)
 ALL SIZES



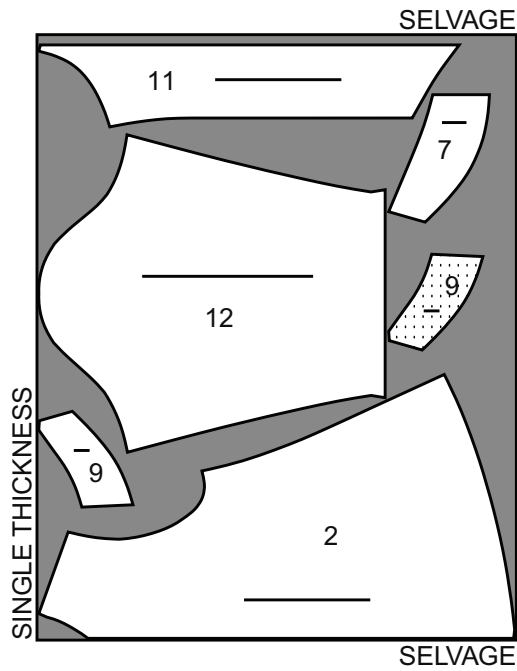
3 CONTRAST 2A

PIECES: 3,4,5,5A,6
 NOTE: BEFORE YOU ALTER OR CUT, LAP AND PIN PIECES 5A TO PIECE 5, MATCHING OOO'S AND CUT AS ONE.
 45"60" (115,150 CM)
 ALL SIZES



2 CONTRAST 1A

PIECES: 2,7,9,11,12
 45"60" (115,150 CM)
 ALL SIZES



4

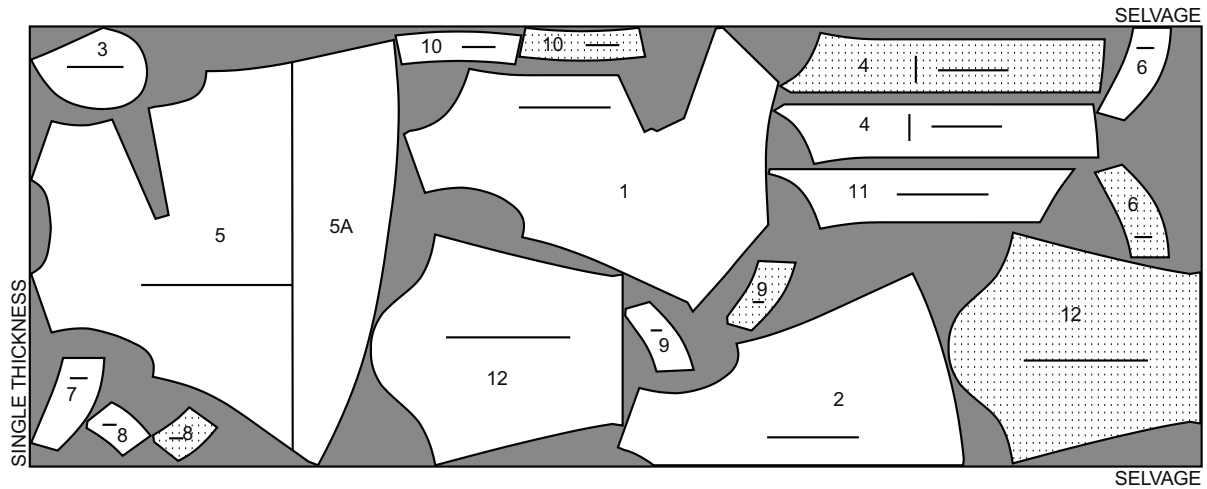
SHIRT B

PIECES: 1,2,3,4,5,5A,6,7,8,9,10,11,12

NOTE: BEFORE YOU ALTER OR CUT, LAP AND PIN PIECES 5A TO PIECE 5, MATCHING OOO'S AND CUT AS ONE.

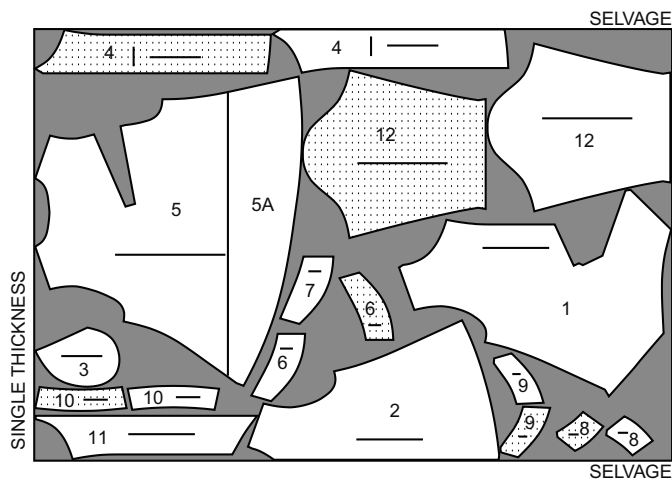
45" (115 CM)

ALL SIZES



60" (150 CM)

ALL SIZES



5

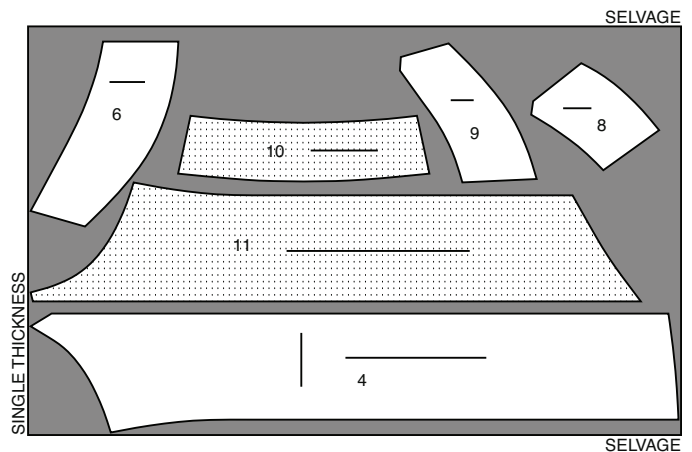
FUSIBLE INTERFACING A,B

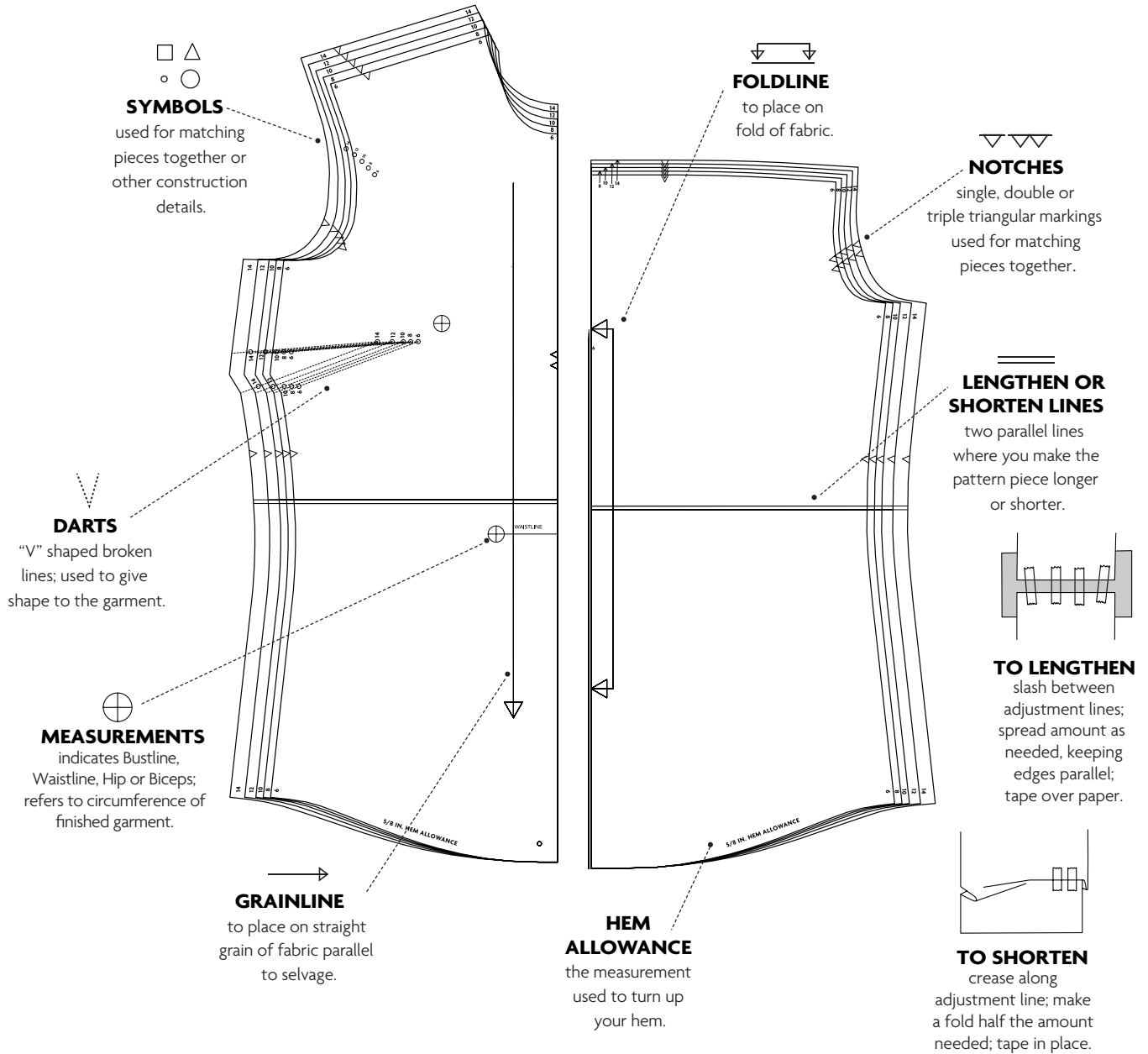
NOTE: OPTIONAL - SAVE REMAINING INTERFACING, CUT TWO 1" SQUARE REMNANTS FOR POCKET OPENING.

PIECES: 4,6,8,9,10,11

20" (51 CM)

ALL SIZES





FABRIC KEY



RIGHT SIDE FABRIC

WRONG SIDE FABRIC

INTERFACING

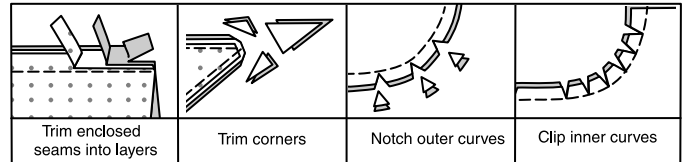
RIGHT SIDE LINING

WRONG SIDE LINING

PATTERN PIECES WILL BE IDENTIFIED BY NUMBERS THE FIRST TIME THEY ARE USED.

SEAM ALLOWANCES:

- > Use 5/8" (1.5 cm) seam allowances unless otherwise indicated.
- > Pin or baste seams, right side together, matching notches. Fit garment before stitching major seams.
- > Press seam allowances flat; then open unless otherwise stated. Clip where necessary so they lie flat.



The following terms appear in **BOLD TYPE** throughout your sewing instructions!

> REINFORCE

Stitch along seamline where indicated in sewing instructions, using small machine stitches.

> SLIPSTITCH

Slide needle through a folded edge, then pick up a thread of underneath fabric.

> STAYSTITCH

Stitch 1/8" (3mm) from seamline in seam allowance (usually 1/2" (13mm) from raw edge).

> TOPSTITCH

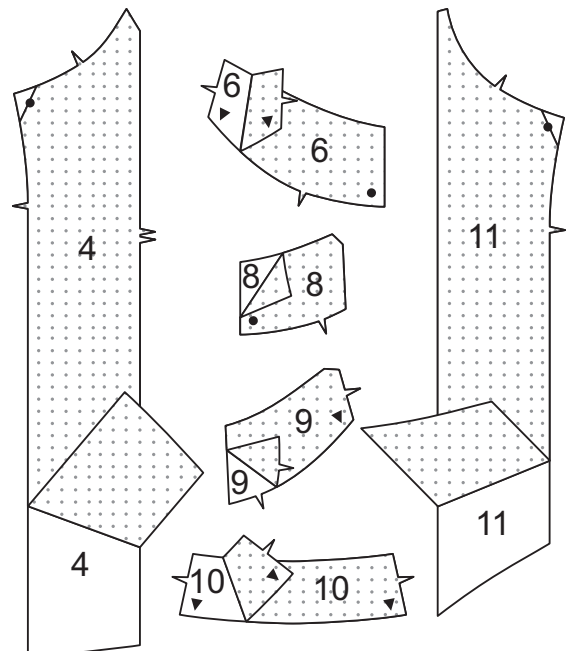
On outside, stitch 1/4" (6mm) from edge, seam or previous stitching, using presser foot as guide, or stitch where indicated in instructions.

SHIRT A, B

NOTE: *The first view mentioned will be illustrated unless otherwise indicated.*

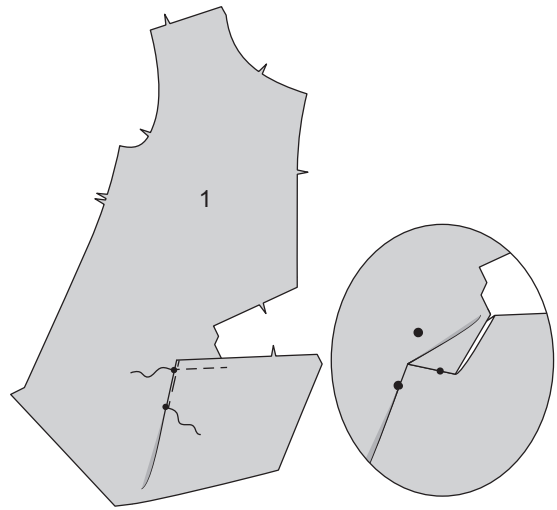
INTERFACING

- 1** Trim corners of INTERFACING, as shown. Fuse interfacing to wrong side of each matching FABRIC section, following manufacturer's instructions.



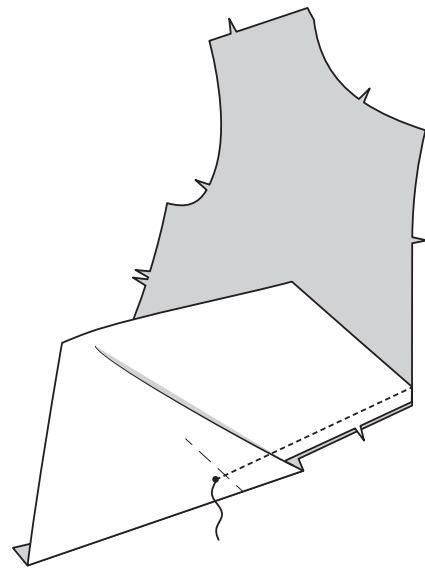
RIGHT FRONT

- 2** To make pleat in RIGHT FRONT (1), on outside, crease along line of small circles. Bring crease to line of large circles. Baste. Baste across upper edge.

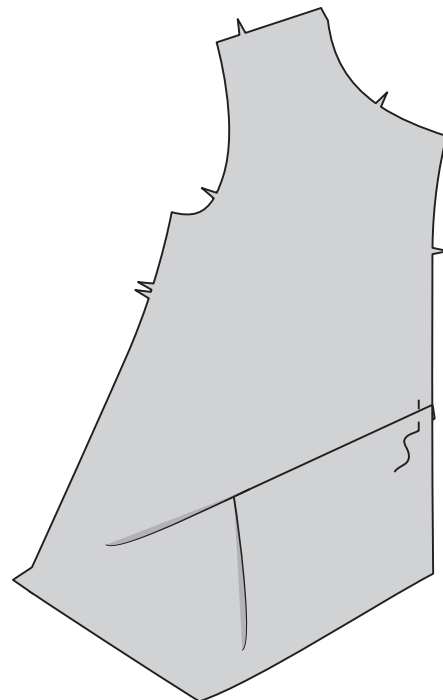


- 3** Pin slashed edges, right sides together, matching notches, centers, stitching lines and small circles. Stitch from front edge to small circles. Press seam allowances flat as sewn.

TIP: *Serge seam allowances.*

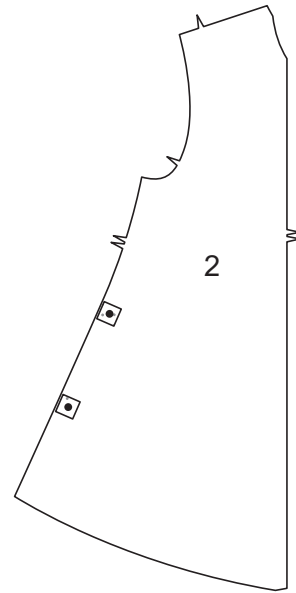


- 4** Press seam allowances downward. Baste across front edge.

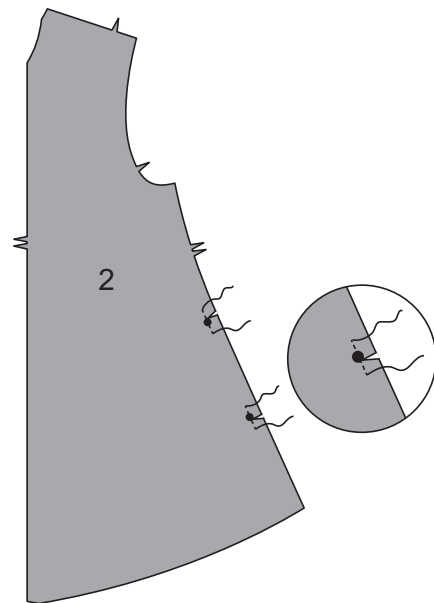


LEFT FRONT

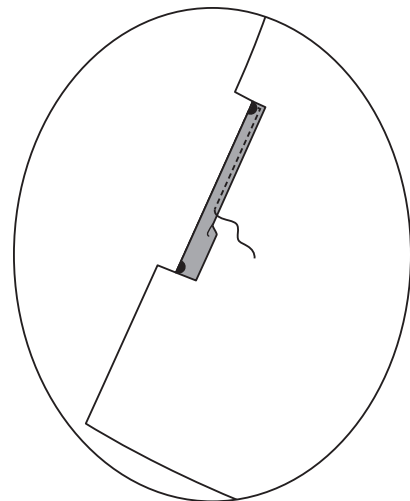
- 5** **OPTIONAL:** For pocket opening, cut two 1" (2.5cm) squares of remnant interfacing. On wrong side, center one square over each large circle at side edge of LEFT SIDE FRONT (2). Fuse, following manufacturer's instructions.



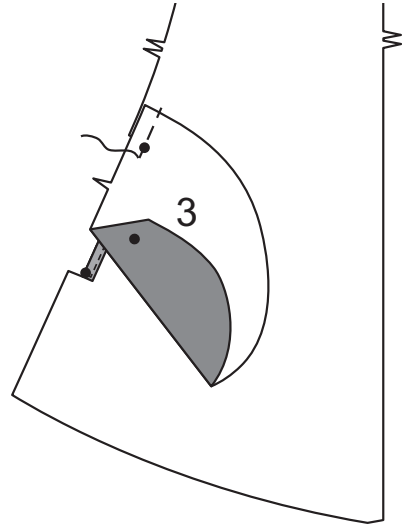
- 6** **REINFORCE** side edges of LEFT SIDE FRONT (2) through large circles, as shown. Clip slightly above and below large circles.



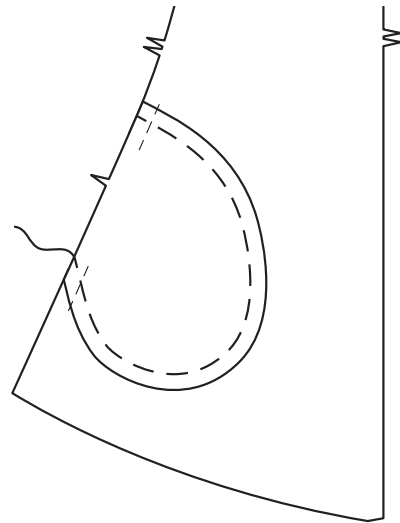
- 7** Make 5/8" (1.5cm) **NARROW HEM** at side edge of left side front between clips, pivoting to large circles, as shown.



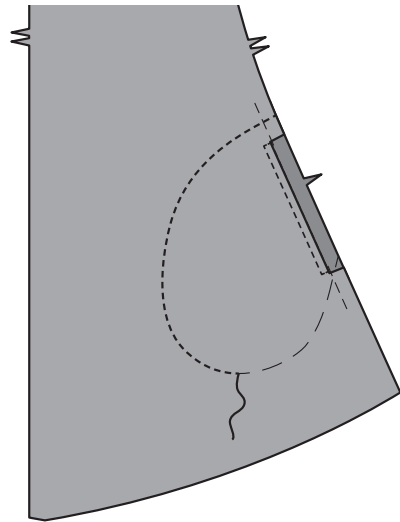
- 8** Pin right side of POCKET (3) to wrong side of left side front at side, matching large circles. Baste sides, keeping finished edge of front free.



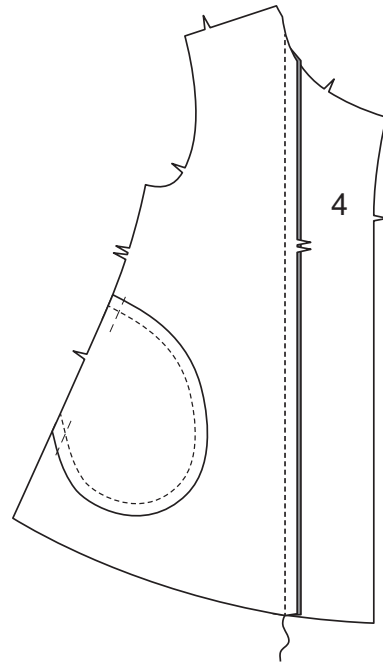
- 9** On inside, baste pocket in place $5/8$ " (1.5cm) from outer edge.



- 10** On outside, **TOPSTITCH** pocket along basting.



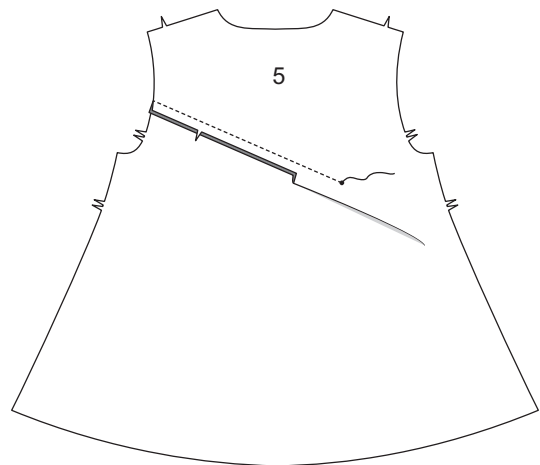
- 11** Pin uninterfaced LEFT FRONT (4) section to left side front, matching notches. Stitch. Press seam allowances toward left front. (Interfaced left front section will be used as facing.)



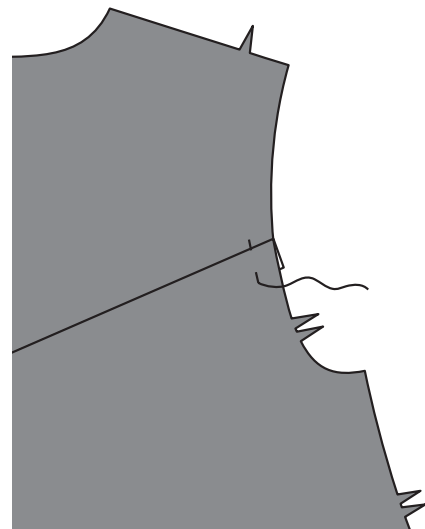
BACK

- 12** Pin slashed edges of BACK (5), right sides together, matching notches, stitching lines and small circles. Stitch from side edge to small circles. Press seam allowances flat as sewn.

TIP: *Serge seam allowances.*



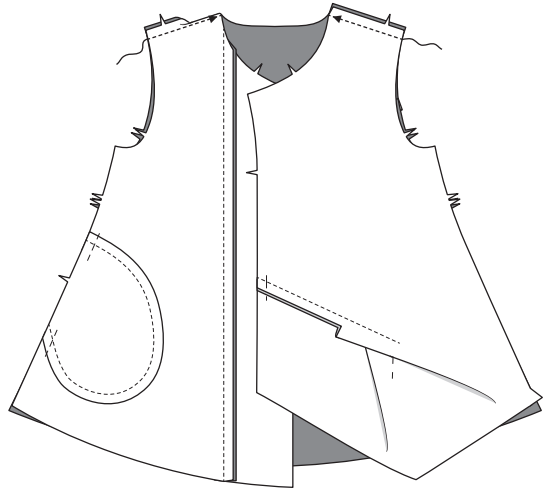
- 13** Press seam allowances downward. Baste across side edge.



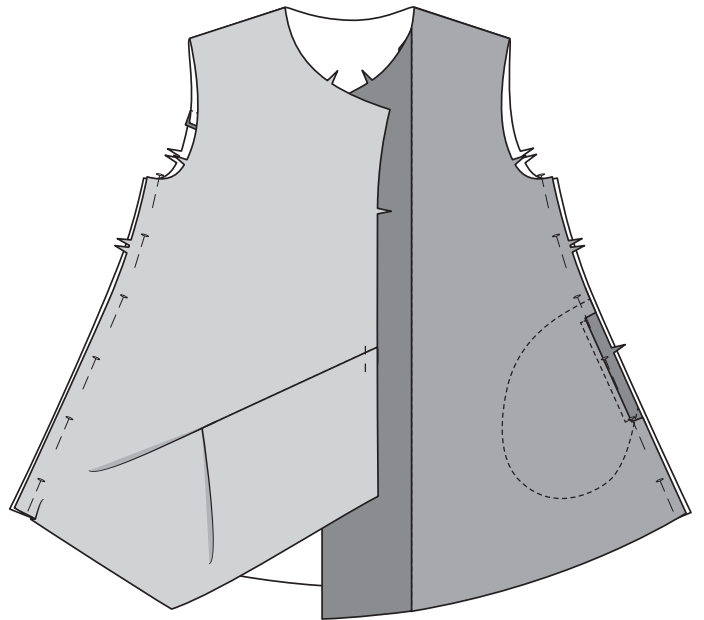
- 14** Stitch back to front at shoulders.
Press seam allowances toward back.

Try On shirt To Fine Tune Fit:

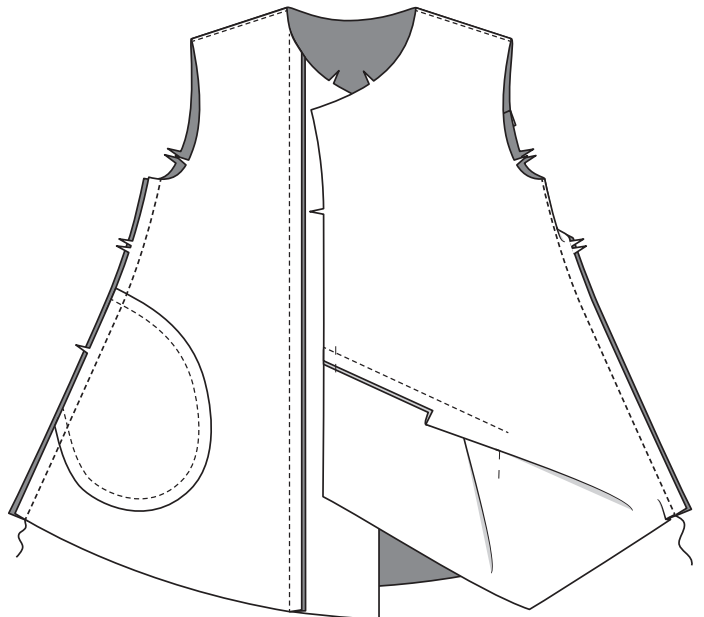
NOTE: *I recommend basting the side seams and trying on the shirt before setting the sleeve to be sure the body fit is right and the sleeve placement is where you want it.*



- 15** Do final fitting before stitching side seams. Pin wrong sides together, placing pins right on the seamline and try on. Make any adjustments and mark new stitching line on inside of shirt.

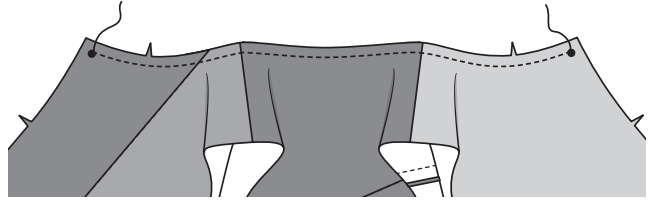


- 16** Stitch back to front at sides.
Press seam allowances toward back.

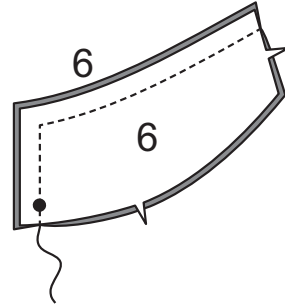


COLLAR AND FACING

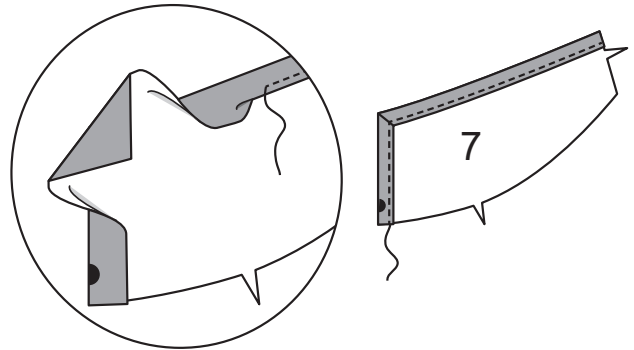
17 **STAYSTITCH** neck edge of shirt between large circles.



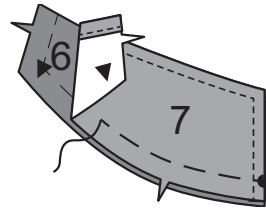
18 Pin COLLAR FRONT (6) sections, right sides together. Stitch unnotched edges. Trim seam allowances.



19 **FINISH** unnotched edges of COLLAR FRONT (7) with a 5/8" (1.5cm) **NARROW HEM**, folding in fulness at corners.



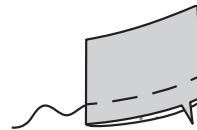
20 Pin wrong side of collar (7) to non-interfaced side of collar (6), matching notches, circles and triangles. Baste raw edges together.



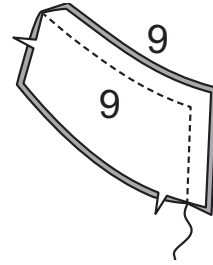
21 Pin COLLAR FRONT (8) sections, right sides together. Stitch unnotched edges. Trim seam allowances.



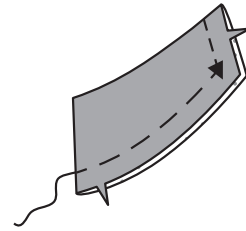
22 Turn right side out. Press. Baste raw edges together.



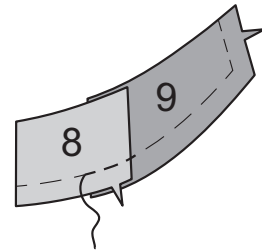
- 23** Pin COLLAR FRONT (9) sections, right sides together. Stitch unnotched edges. Trim seam allowances.



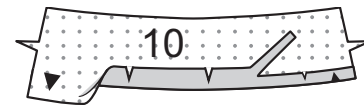
- 24** Turn right side out. Press. Baste raw edges together.



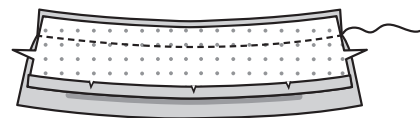
- 25** With right sides up, pin collar front (8) to collar front (9), matching notches. Baste lower edges together.



- 26** Press under $5/8$ " (1.5cm) on neck edge of interfaced BACK COLLAR (10) section, clipping if necessary. Trim pressed-under edge to $3/8$ " (1cm). (This is back collar facing.)



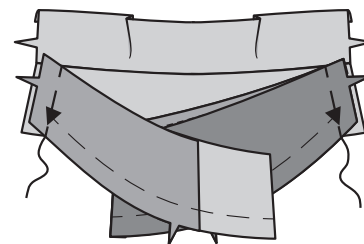
- 27** Pin back collar to facing, right sides together, matching centers. Stitch upper edge. Trim seam allowances.



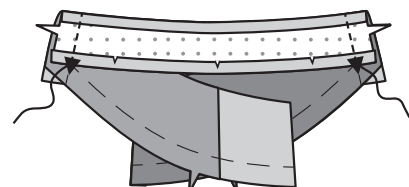
- 28** Turn facing to inside. Press.



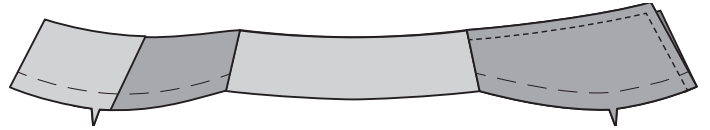
- 29** Open out back collar. Pin right and left collar to short ends of back collar, matching notches, keeping facing free. Baste.



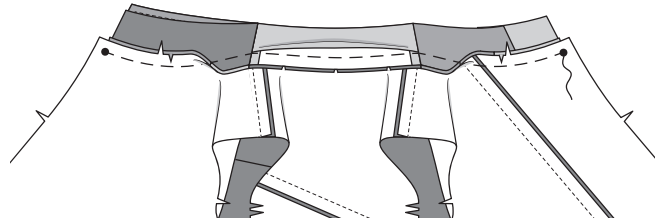
- 30** Turn collar facing to outside (over right and left collar). Stitch across short ends. Trim seam allowances.



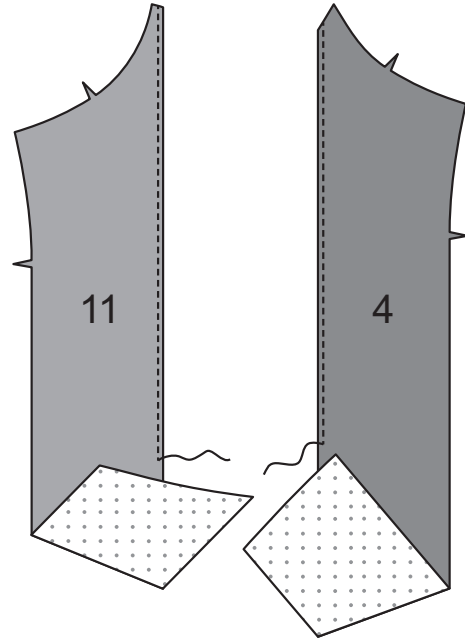
- 31** Turn back collar facing to inside again. Press.



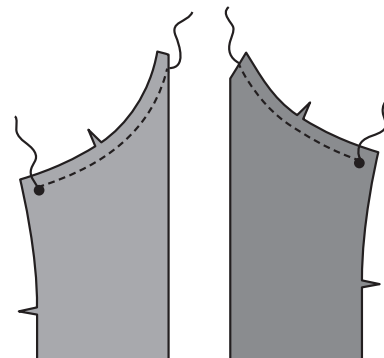
- 32** Pin collar to neck edge, matching notches, center backs and circles, clipping shirt neck edge where necessary. Baste, keeping pressed-under edge of facing free.



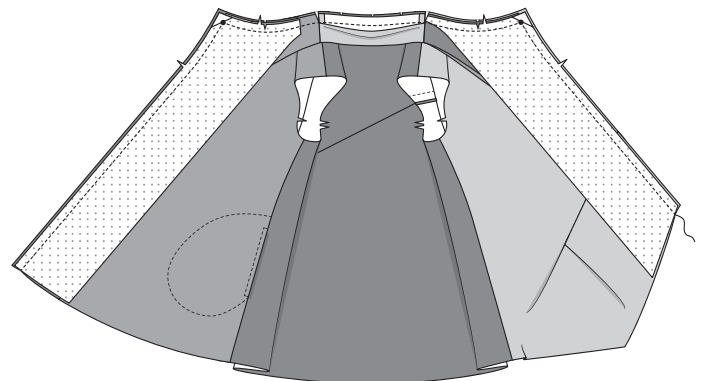
- 33** **FINISH** inner edge of RIGHT FRONT FACING (11) and left front FACING (4).



- 34** **STAYSTITCH** neck edge of facings above large circle.

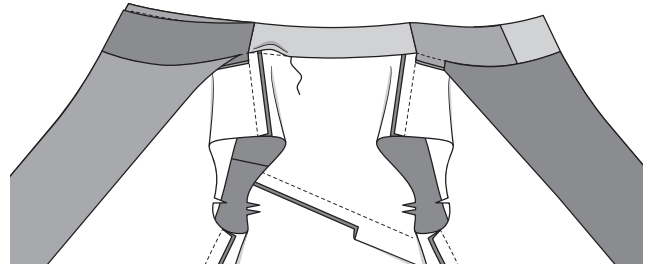


- 37** Pin corresponding front facing to front and neck edges, matching notches, triangles and large circles, clipping neck edge of facings where necessary. Stitch, keeping pressed-under edge of back collar facing free. Trim seam allowances. Clip front collar at ends of back collar.

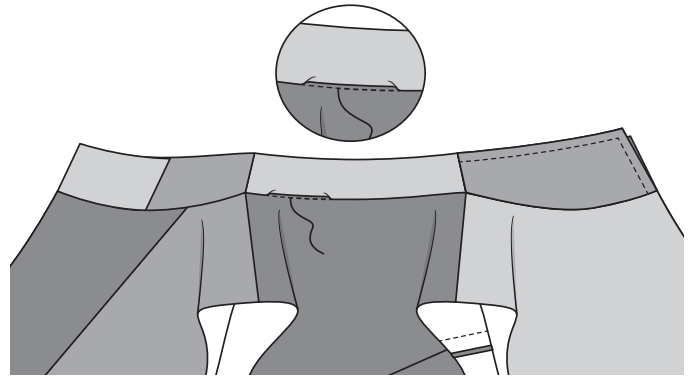


36 Turn facings to inside. Press seam allowances toward collar.

SLIPSTITCH pressed-under edge of back collar facing over seam.



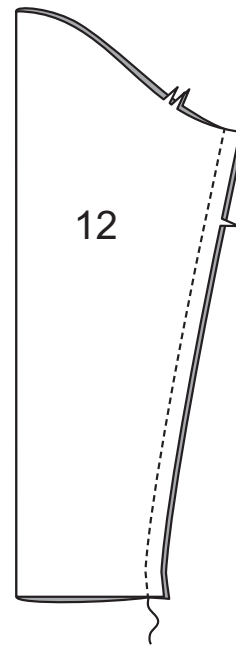
37 To hold back collar in place, on outside, spread back collar seam with fingers until previous stitching is visible. Stitch on top of previous stitching between shoulder seams, through all thicknesses.



SLEEVE

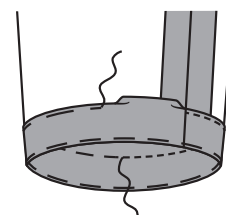
View A:

38 Stitch SLEEVE (12) seam.

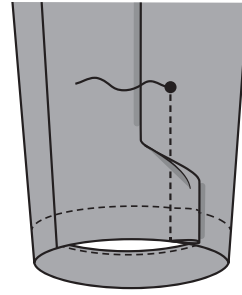


39 Turn up a 1" (2.5cm) hem on lower edge of sleeve. Baste close to fold. Turn under 1/4" (6mm) on raw edge. Baste hem in place close to upper edge. Press.

TOPSTITCH hem along upper basting.

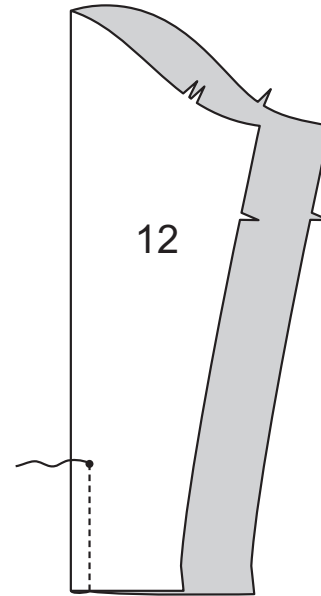


40 To make pleat on sleeve, bring stitching lines, wrong sides together, matching circles. Stitch along stitching lines from lower edge to circles. Press fold of pleat toward back.

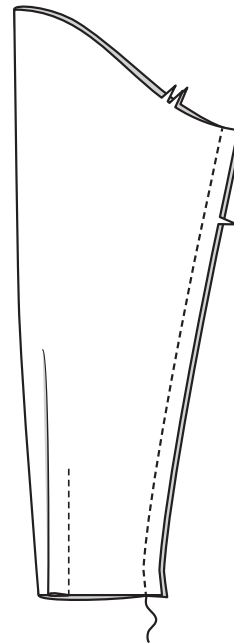


View B:

41 To make pleat on SLEEVE (12), bring stitching lines, right sides together, matching circles. Stitch along stitching lines from lower edge to circles. Press fold of pleat toward front.

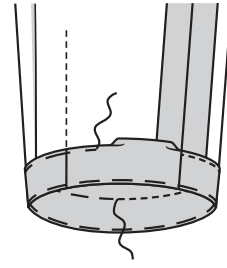


42 Stitch sleeve seam.



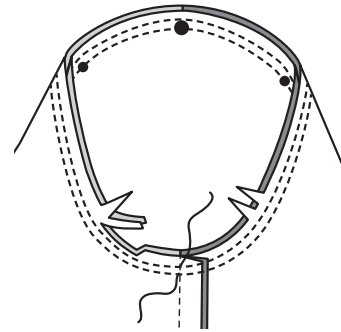
- 43** Turn up a 1" (2.5cm) hem on lower edge of sleeve. Baste close to fold. Turn under ¼" (6mm) on raw edge. Baste hem in place close to upper edge. Press.

TOPSTITCH hem along upper basting.



Views A, B:

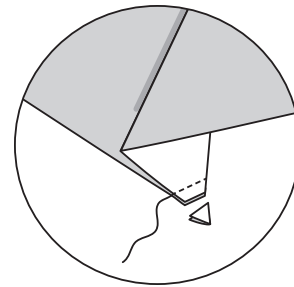
- 44** With right sides together, pin sleeve into armhole edge, matching notches, underarm seams, small circles and large circle to shoulder seam. Baste. Stitch. Stitch again ¼" (6mm) away in seam allowances. Trim close to second stitching. Press seam allowances flat. Turn seam allowances toward sleeve.



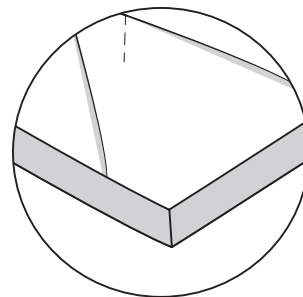
FINISHING

Hem:

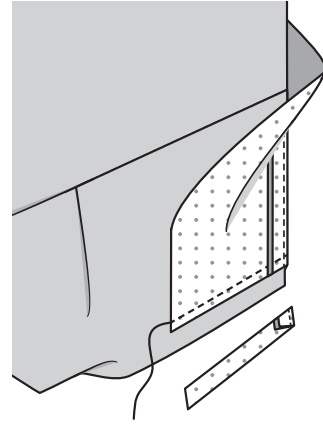
- 45** To miter lower corner of right front, fold at small circle, right sides together, matching foldlines. Stitch from lower edge to fold. Trim seam allowances.



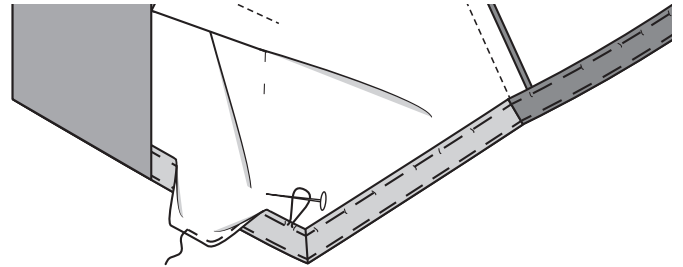
- 46** Turn corner right side out. Press.



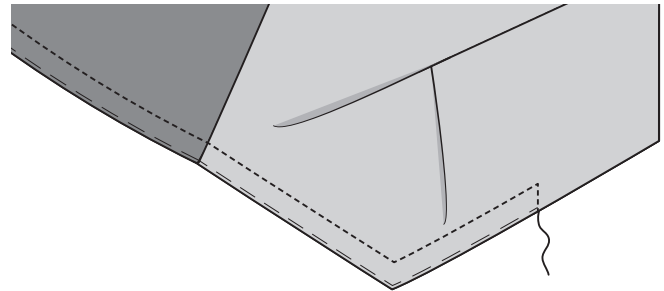
- 47** Turn lower edge of front facings to outside along seam. Stitch across facing 1" (2.5cm) above raw edge. Trim as shown.



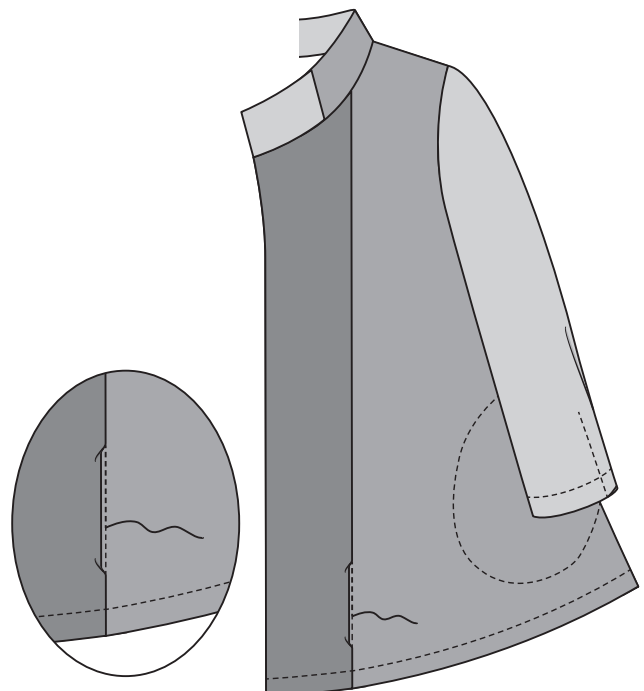
- 48** Turn facings to inside again, continuing to turn under 1" (2.5cm) on remainder of lower edge. Baste close to fold. Machine-baste $\frac{1}{4}$ " (6mm) from raw edge. Pull up bobbin thread and adjust fullness; shrink out with steam. Turn under $\frac{1}{4}$ " (6mm) on raw edge. Baste hem in place close to upper edge. Press.



- 49** **TOPSTITCH** hem along upper basting to inner edge of facings, squaring stitching on right front to lower edge.



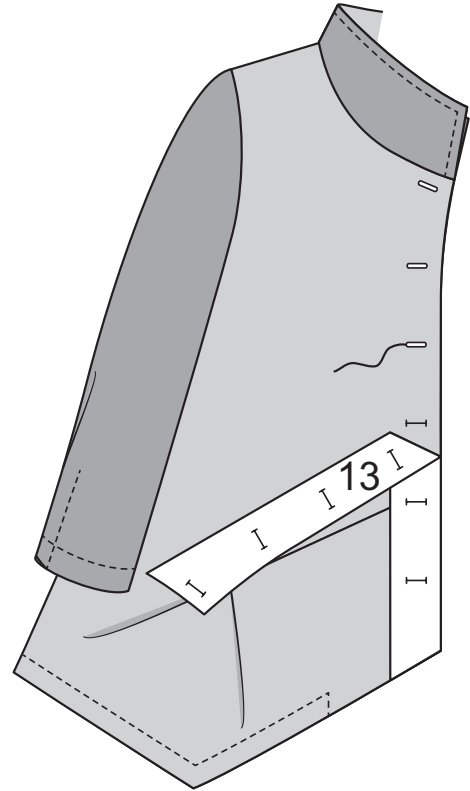
- 50** To hold left front facing in place, on outside, spread left front seam with fingers until previous stitching is visible. Stitch on top of previous stitching between left front and left side front seam, through all thicknesses.



Buttonholes and Buttons:

51 Place GUIDE FOR BUTTONHOLES (13) on right front, having edges of tissue even with neck and front edges of shirt. Transfer markings.

Make buttonholes in right front at markings.



52 On outside, sew buttons to left front at markings.





Congrats!


You've completed your sewing adventure!

**SHARE
YOUR look!**



Post your pattern and tag us at
@MCCALLPATTERNCOMPANY and use #VOGUEPATTERNS
for a chance to be featured on our social media!

Look for more Vogue PDF patterns at **VOGUEPATTERN.COM**

 1-800-255-2762

© 2021 IG Design Group Americas, Inc. | All Rights Reserved
Sold for individual home use only and not for commercial or manufacturing purposes.